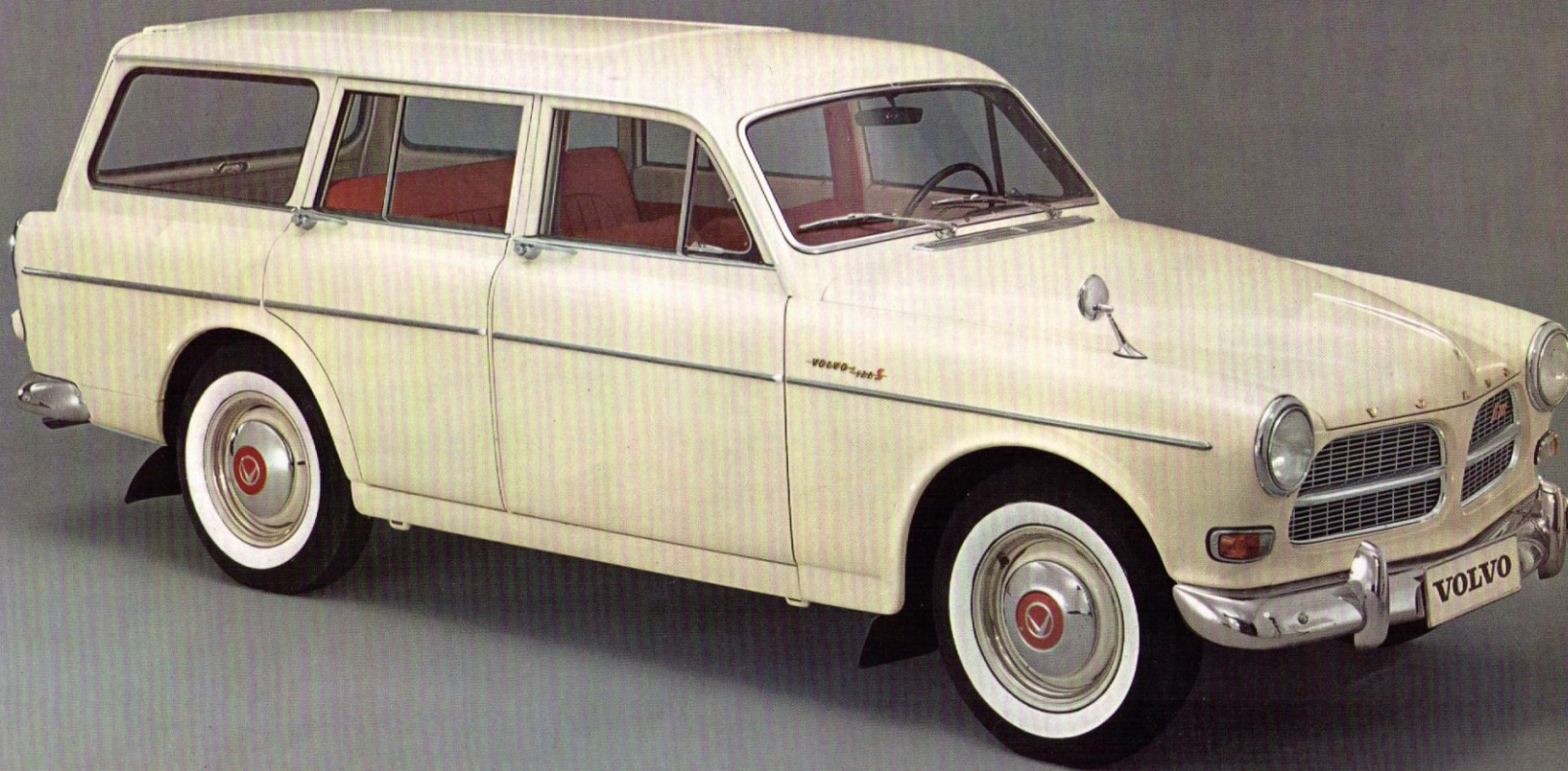


VOLVO

122 S

STATION WAGON



VOLVO 122S STATION WAGON



This Station Wagon is spacious and versatile. Its roomy interior combines passenger car comfort with the load carrying capacity of a small truck. It is economical and hard wearing in both functions. As a passenger car, it seats five adults comfortably, luggage space is generous. A few simple adjustments convert it into a two seater with a load 72" deep, 34" high, 50" wide. The rear opening divides horizontally; the upper half may be opened from the inside. The rear compartment floor is low for ease of loading and unloading. Fragile or light packages are protected by a durable, attractive textile floor mat. The interior is completely lined with practical and smart leatherette.



Wide doors give easy access to the elegant interior.



Luggage space is easily accessible through rear side doors.

B 18 D engine

Four-cylinder, overhead valves, five-bearing crankshaft.

Bore 3.313"
Stroke 3.15"
Capacity 109 cu.in.
Compression ratio .. 8.5:1
Max. output 90 b.h.p. (SAE)
at 5000 r.p.m.
Max. torque 105 lb.ft. (SAE)
at 3500 r.p.m.
Carburetors Two SU 1 1/4"
horizontal carburetors

Fullflow oil filter.

Cooling system

Hyper-effective radiator. Thermostat-controlled water circulation with bypass valve.

Battery

Voltage 12 V
Capacity 60 amp. hours.

Generator

Fan-cooled with automatic voltage control.
Effect Max. 380 W

Starter motor

Output 1 h.p.
The starter switch is combined with the ignition switch and has an extra position in which all the electric equipment can be used when the engine is not running.

There is a tamperproof armored cable between the ignition switch and the ignition coil.

Clutch

Hydraulically operated 8 1/2" single dry plate clutch.

Transmission

Four-speed, fully synchronized and silent running transmission with a central floor shift lever.

Ratios: 1st 3.13:1
2nd 1.99:1
3rd 1.36:1
4th 1:1
Reverse 3.25:1

Propeller shaft

Divided for vibration-free operation. The center bearing is mounted in rubber blocks to damp noise and vibration. Center ball bearing lubricated for life.

Rear axle

Hypoid type.
Ratio 4.56:1

Steering gear

Cam and roller type.
Number of turns,
left lock to right
lock 3 1/4
Turning circle 33 ft. 10 in.

Front suspension

Independent suspension with coil springs and control arms carried in rubber bushings and ball joints. Stabilizer.

Rear suspension

Fixed longitudinal support arms, torque rods and track bar. Coil springs.

Shock absorbers

Double-acting, hydraulic, telescopic shock absorbers front and rear.

Wheels and tires

Pressed steel wheels — 4 1/2" rims.
All wheels balanced.
Tubeless 6.40—15" tires.

Footbrake

Duo-Servo drum brakes. Hydraulic and self-centering.
Drum diameter 10" front, 9" rear
Total brake friction
area 147 sq.in.

Handbrake

Operates separately on rear wheels. Hand-brake lever located beside driving seat.

Body

Integral construction, all-welded steel body, fully rust-protected by modern methods.

Fuel tank

Located at rear.
Capacity 12 US gallons

Lighting equipment

Flasher directional signals front and rear with audible and visible warning signals. Combined stop and tail lamps. Reversing lights incorporated in the tail lamps. The internal lighting goes on when either of the front doors are opened. Rheostat-controlled instrument lighting. Map-reading lamp.

Instrumentation

Combined instrument with speedometer, fuel gauge and water temperature gauge. Odometer and trip meter. Warning lamps for charging, oil pressure, full headlights, directional signals.

Miscellaneous equipment

Horn ring on steering wheel. Foot dimmer switch. Directional signal lever with automatic return. Heater and ventilation installation. Thermostat-controlled heat supply. Two-speed fan. Electric windshield wipers with two speeds and automatic parking. Nozzles for windshield washers. Twin padded sun visors. Dazzle-free rear view mirror. External mirrors fitted on front fenders. Recess for radio and accommodation for loudspeaker. Pockets on front doors. Cigarette lighter. Ashtrays front and rear. Mud flaps. Tool kit and jack. Spare wheel.

Safety belts

Standard equipment includes anchorages for front and rear seat safety belts.

Main dimensions and weight

Wheelbase 102 1/2"
Track, front 51 1/4"
Track, rear 51 1/4"
Overall length 176 1/2"
Overall width 63 1/4"
Overall height,
unloaded 60 1/4"
Ground clearance,
unloaded 8 1/4"
Ground clearance,
with four passengers 7"

Cargo space:
Length 46 1/4"
Length with rear
seat folded down .. 72"
Maximum width 49 1/2"
Height 34"

Rear door opening:
Width 41 1/2"
Height 30 1/4"

Curb weight 2600 lb.

The factory reserves the right to modify prices, design and equipment.

AB VOLVO



GÖTEBORG · SWEDEN

Importers:

VOLVO IMPORT, INC.,
452 Hudson Terrace, Englewood Cliffs,
New Jersey

Distributors:

VOLVO DISTRIBUTING, INC.,
452 Hudson Terrace, Englewood Cliffs,
New Jersey

SWEDISH MOTOR IMPORT, INC.,
3303 West 12th Street, Houston 24, Texas

VOLVO WESTERN DISTRIBUTING, INC.,
12925 Riverside Drive, Sherman Oaks, Calif.

In Canada:

VOLVO (CANADA) LTD.
Head Office: 440 Comstock Road,
Scarborough (Toronto), Ont.
Branch Office: 1090 W. Georgia St.,
Vancouver 5, B. C.