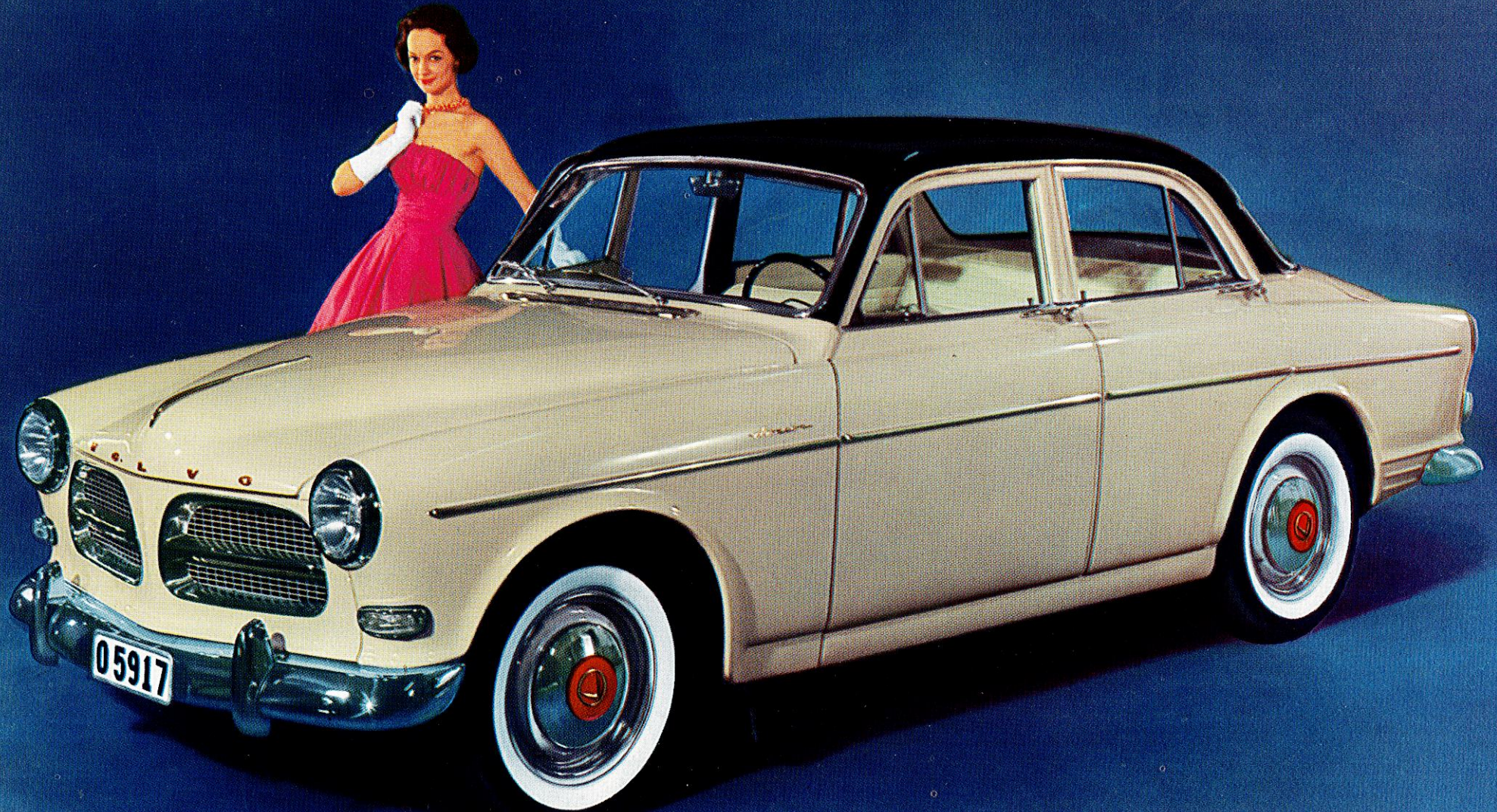


VOLVO 122 S

ARKIVEXEMPLAR
Exportreklamavdelningen

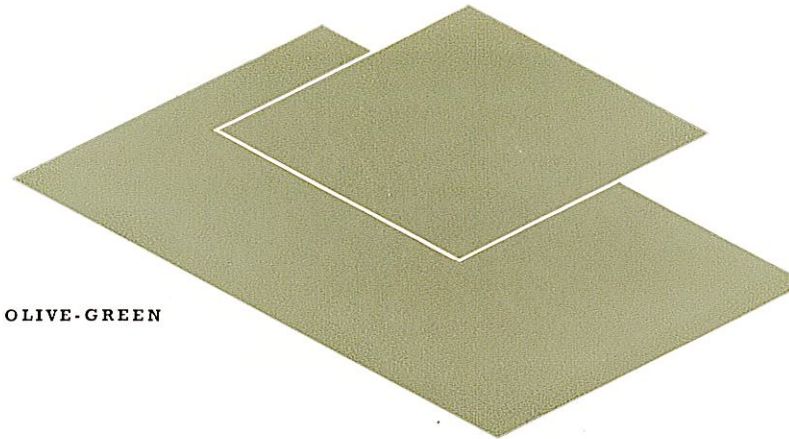


SPECIFICATION SUMMARY VOLVO 122 S

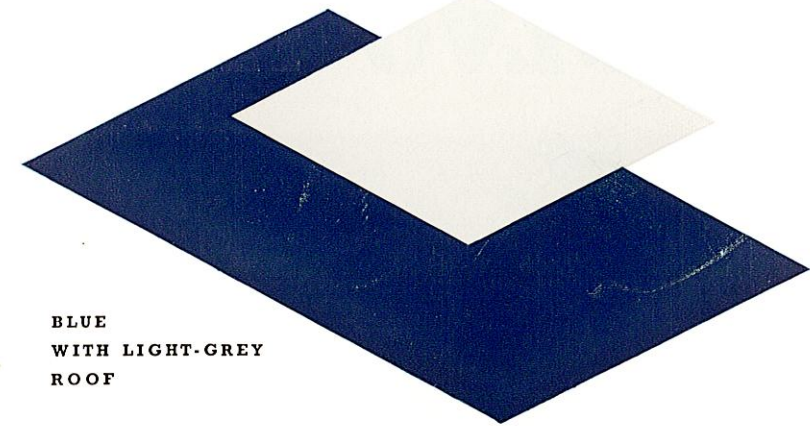
Type designation	P 12204
Engine	Four-cylinder, overhead valve, type B16B
Bore	3.125" (79.37 mm)
Stroke	3.15" (80 mm)
Capacity	97 cu. in. (1.58 litres)
Compression ratio	8.2:1
Output	85 b.h.p. at 5,500 r.p.m.
Torque	87 lb. ft. (12 kgm) at 3,500 r.p.m.
Oil filter	Full flow
Carburettors	Twin SU horizontal
Clutch	Single dry plate
Operation	Hydraulic
Gearbox	Type M4, fully synchronized
Number of gears	Four forward, one reverse
Rear axle	Hypoid type. Axle shafts carried in taper roller bearings
Steering gear	Cam and roller
Front suspension	Individual suspension with coil springs and control arms. Shock absorbers. Stabilizer
Rear suspension	Coil springs. Rear axle carried on two rubber-mounted support arms, two torque arms and a track bar. Shock absorbers
Foot brakes	Self-centring hydraulic Duo-Servo brakes, 10" drums
Total brake lining area	165 sq.in.
Wheels	Pressed steel disc type
Tyres	Tubeless, low pressure 5.90—15". White sidewalls
Body	All-welded, integral construction steel body. Thoroughly rust-proofed
Safety belt fittings	Fittings for VOLVO safety belts
Wheelbase	102.4" (2600 mm)
Overall length	175.2" (4395 mm)
Overall width	63.8" (1620 mm)
Track, front	51.8" (1315 mm)
Track, rear	51.8" (1315 mm)
Ground clearance, unloaded	7.9" (210 mm)
Ground clearance four passengers	6.7" (185 mm)
Kerb weight	2,400 lb. (1090 kg)

The factory reserves the right to modify prices, design and equipment

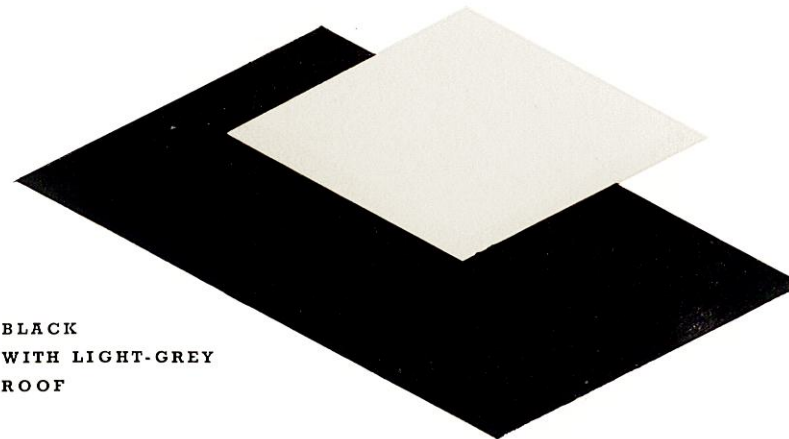
Colour combinations



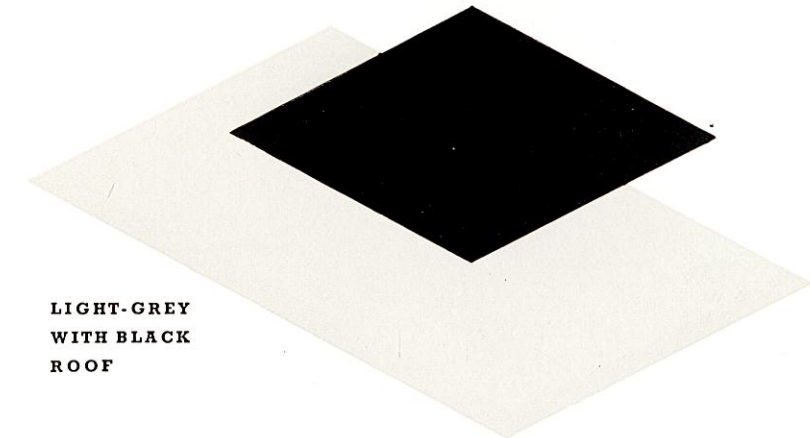
OLIVE-GREEN



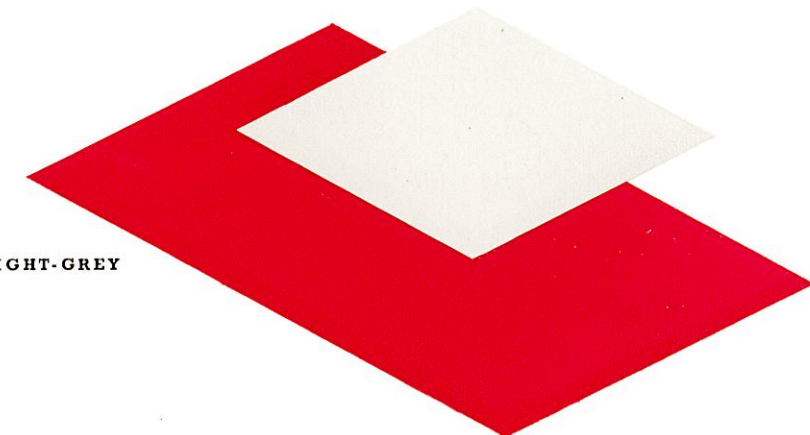
BLUE
WITH LIGHT-GREY
ROOF



BLACK
WITH LIGHT-GREY
ROOF



LIGHT-GREY
WITH BLACK
ROOF



RED
WITH LIGHT-GREY
ROOF

AB VOLVO

EXPORT DEPARTMENT
GÖTEBORG • SWEDEN

