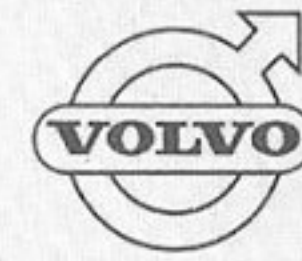




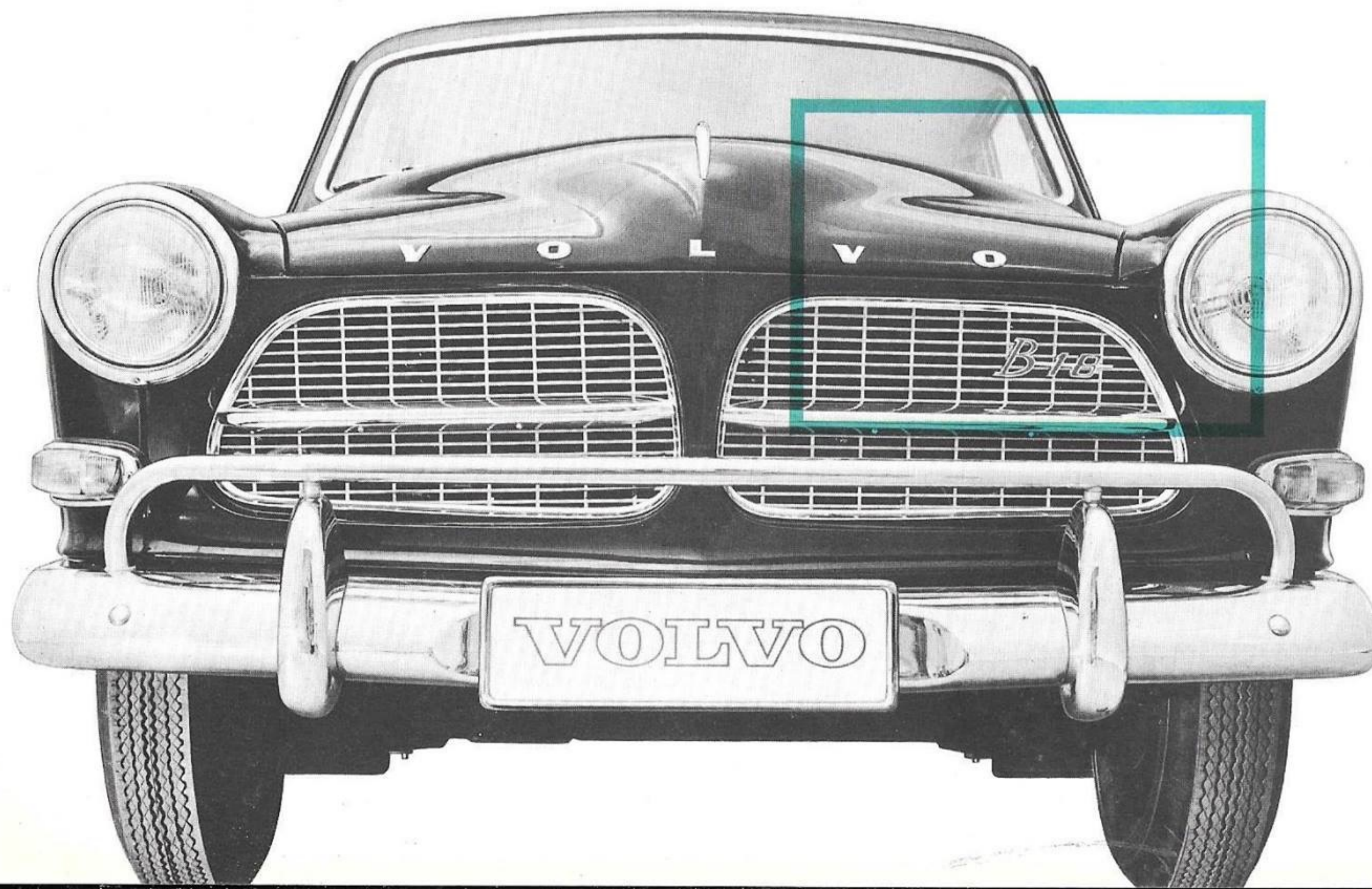
VOLVO

THE 122S SERIES



B-18

The B18 Engine — for power, reliability, economy



The Volvo 122S series—superior, modern cars —are gracefully styled and exceptional in performance.

Exterior lines are smooth and compact—yet interiors are roomy and comfortable. And of appeal to all who want a safe, long-distance car that is smartly representative. Excellent driving and road holding qualities, fast response in heavy traffic and ease in parking are features of the Volvo 122S series.

Volvo cars are designed for utmost safety. The all-welded, integral steel body is highly stress-resistant. The B18 engine—90 b.h.p. SAE—has won acclaim for fast acceleration, safe passing, high top-speed and low fuel consumption. Front disc brakes and rear drum brakes on Sedan Models—and drum brakes all round on the Station Wagon—give smooth positive stopping distances.

Volvo cars—effectively rust-protected and weatherproofed—are built for year-round driving in hard climates. High capacity heater and de-mister system keep interiors cosy and warm —banish windshield misting and icing fast. A 12-volt electrical system packs plenty of power for cold starting.

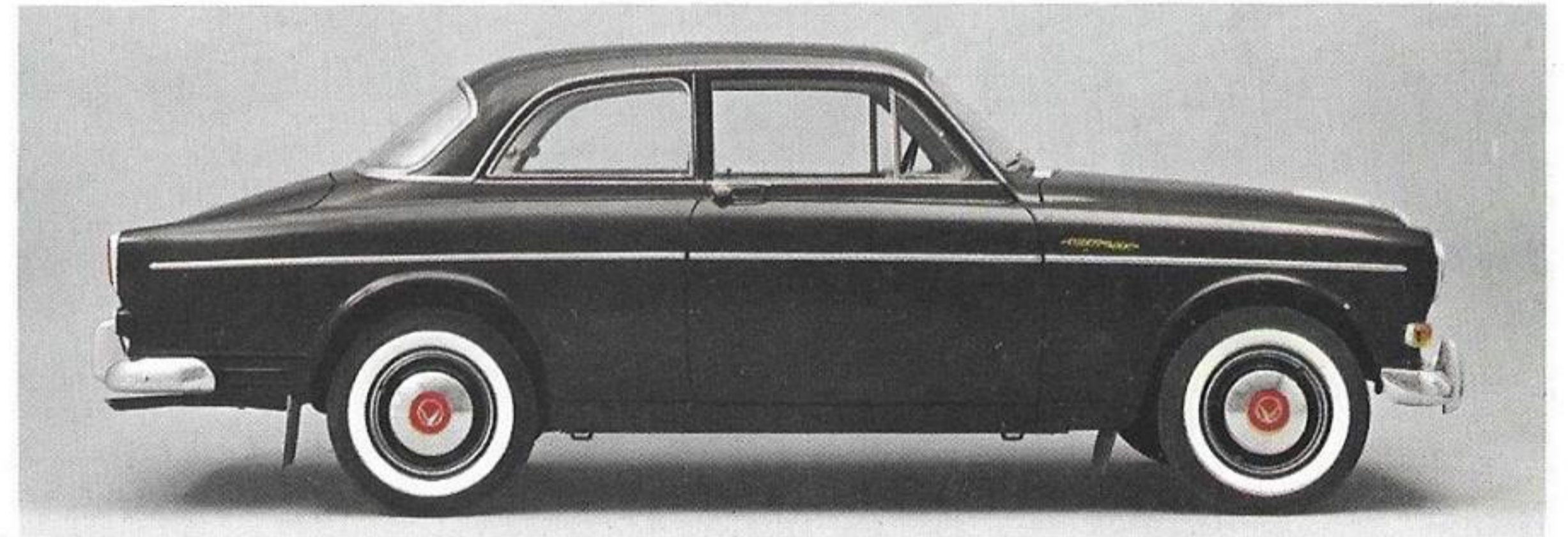
Volvo quality and Volvo performance are well-known throughout the world. Every Volvo automobile has a sound basic design, is made of superior material and is manufactured to very rigid quality control and inspection standards.

*Four-door Sedan * Two-door Sedan * Station Wagon*

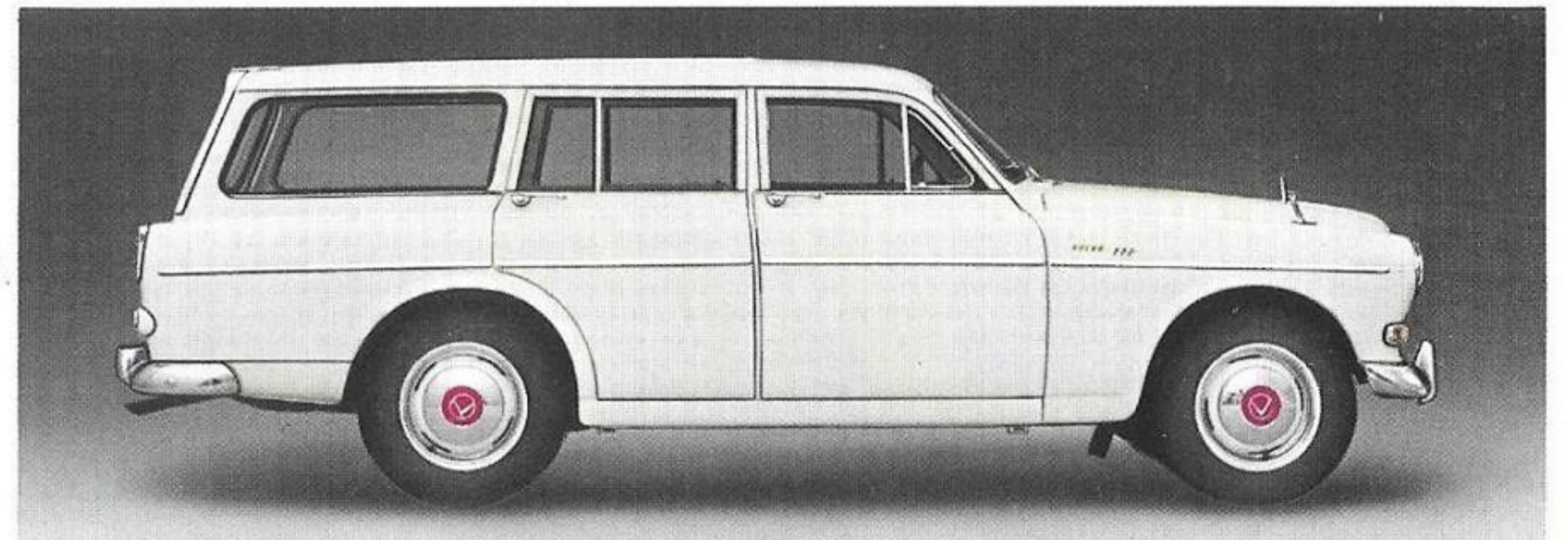
3198.00



3098.00

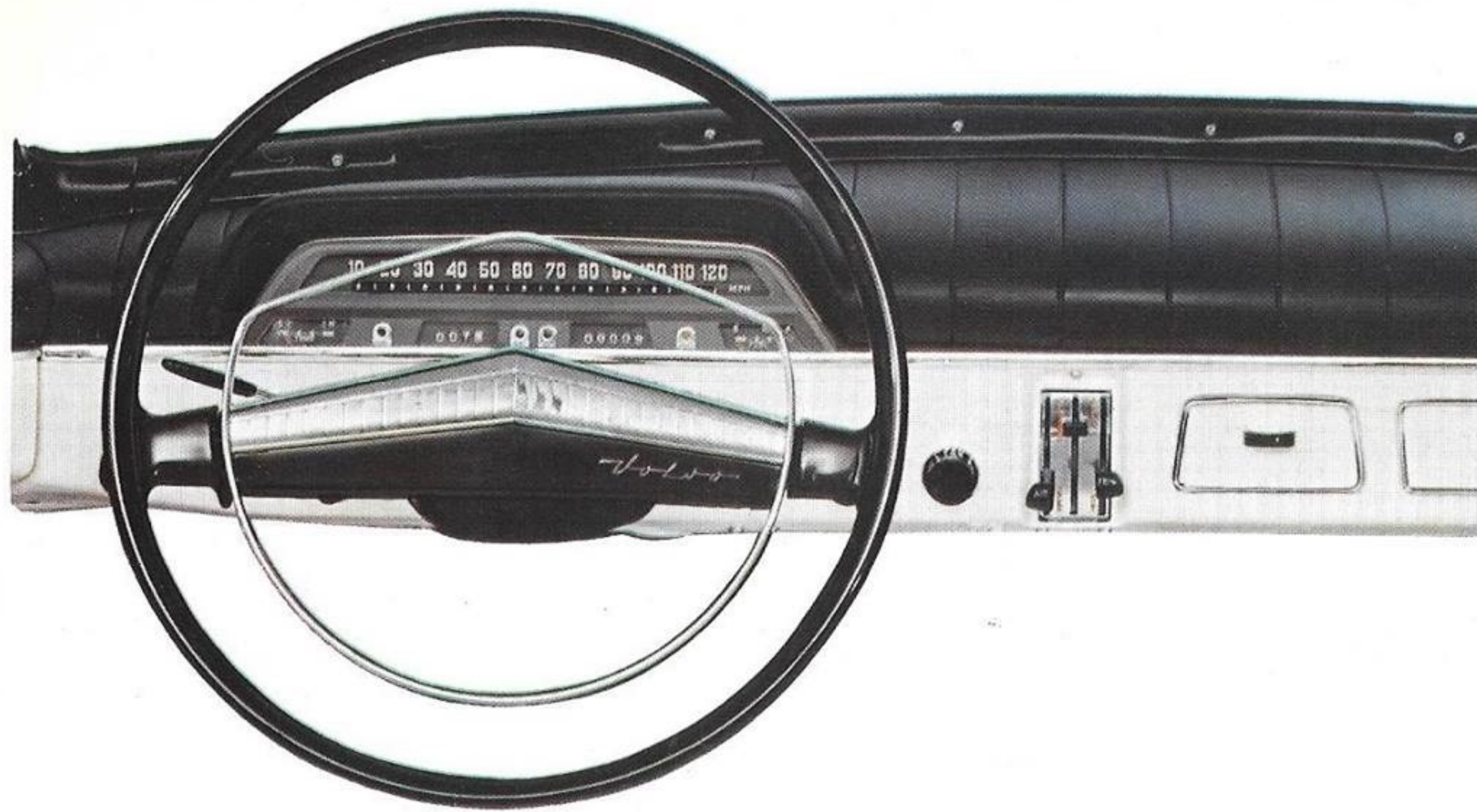


3598.00



THE VOLVO 122S SERIES





Clear, easy-to-read instruments are set right in front of the driver. Controls and switches are easy to reach. The safety-type steering wheel is angled perfectly for comfort and safe steering. Instrument-panel top is padded and covered with non-glare fabric; Panel underside is smooth and obstruction-free.



Individual front seats are shaped for comfort. The wide rear seat is perfectly padded for restful riding. Interior covering of hard-wearing, leath-erette upholstery harmonizes well with body colors. Practical rubber mats on the floor are easy to clean.

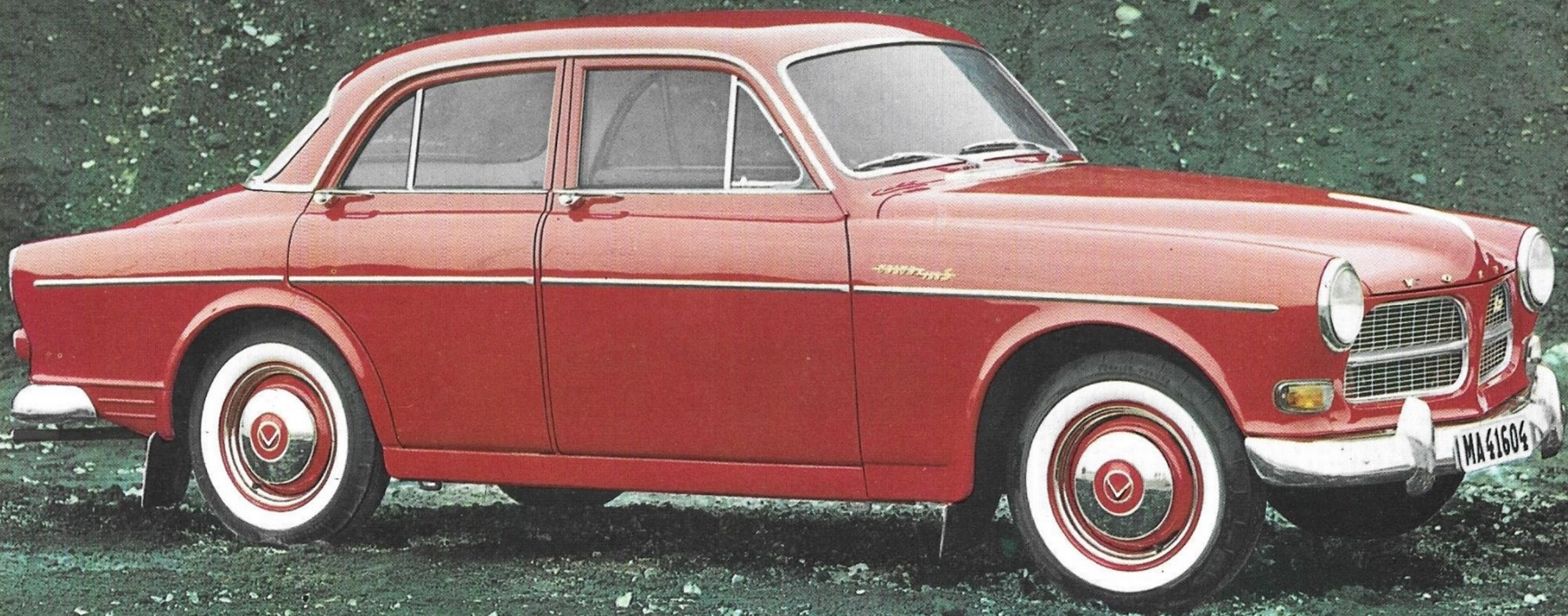


THE VOLVO 122S FOUR-DOOR



Smart styling accentuates this car. Fast, safe and easy to drive. Four doors for quick access to a luxurious, well-planned interior. Standard equipment includes a heater and de-mister system. This system has a thermostatically controlled fresh air supply giving a uniform temperature plus all round vision even in the coldest weather.

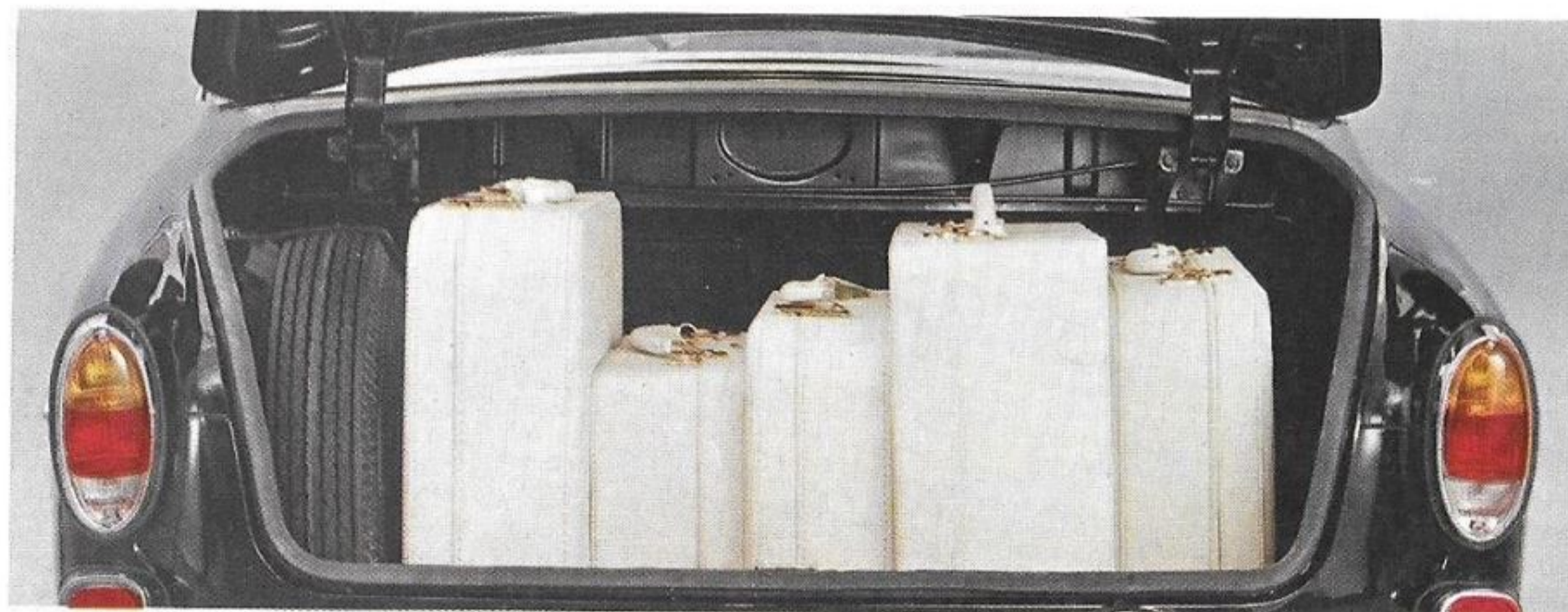
Drive a Volvo 122S and learn what car handling is all about! Steering is easy and exact; road holding qualities exceptional. Woman drivers appreciate particularly its flexible performance in heavy traffic and the ease with which it can be parked even in confined spaces. The powerful, dependable B 18 engine responds instantly to a touch on the accelerator pedal. Superior transmission synchronization makes gear changing quick and positive.





Oversized doors with wide angle openings give easy access. Massive hinges and locks increase stability and safety. Front doors have large map-pockets.

Front seat backrests adjustable to three different angles; front and rear positions lock automatically for greater safety. With backrests folded down, access to rear seat is easy. Rear windows open for draft free ventilation.



Luggage compartment is roomy—no high sill to block loading of big pieces. Rubber floor-mat protects luggage; cleans easily. Spare wheel stowed vertically at one side—out of the way but easy to reach. Back-up lights are built into the rear parking lamp. They light automatically when you shift into reverse.



THE VOLVO 122S TWO-DOOR



The Volvo 122S two-door is manufactured especially for those who prefer the security and the size of a two door automobile. The interior is well-planned and elegant; the body has sporting lines.

Controls and pedals function easily with utmost precision. The strong B18 engine has ample reserve power for fast acceleration and ideal performance on long trips at high speed. Its modern design includes a five-bearing crankshaft, fully-machined combustion chambers, separate induction ports. The B 18 is fuel-thrifty; runs quietly.

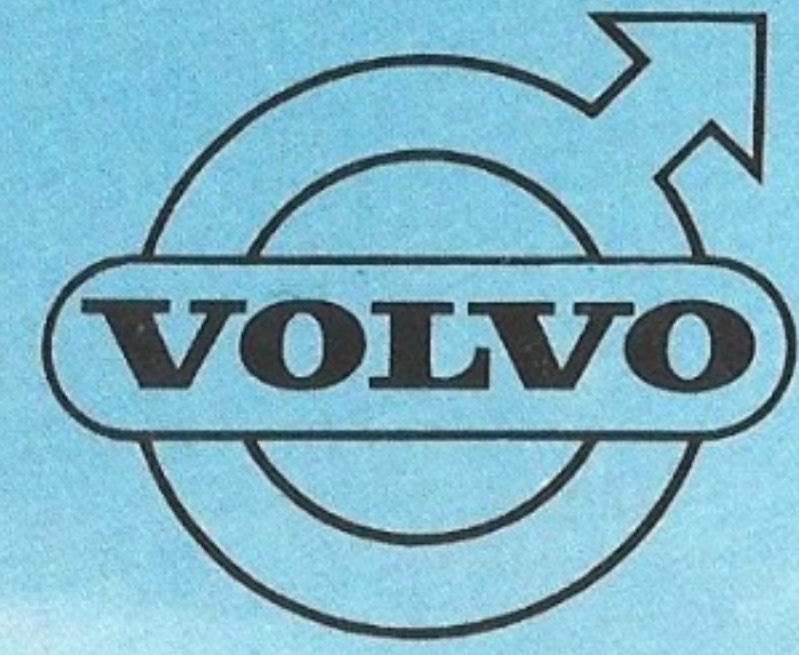
The ruggedly superior design of the suspension system and the well-balanced springing give this car exceptional road-holding qualities. These factors also contribute to your comfort and safety under all driving conditions.



PRODUCTS OF SUPERB SWEDISH ENGINE



ERING





THE VOLVO 122S STATION WAGON



1



2

1 *Wide doors give easy access to the elegant interior.*

2 *Luggage space is easily accessible through rear side doors.*

3 *With rear seat in position, the Station Wagon is a roomy five-seater with lots of luggage space.*

4 *With rear seat folded, it is a perfect two-seater with outsize transport space for baggage and freight.*



3



4

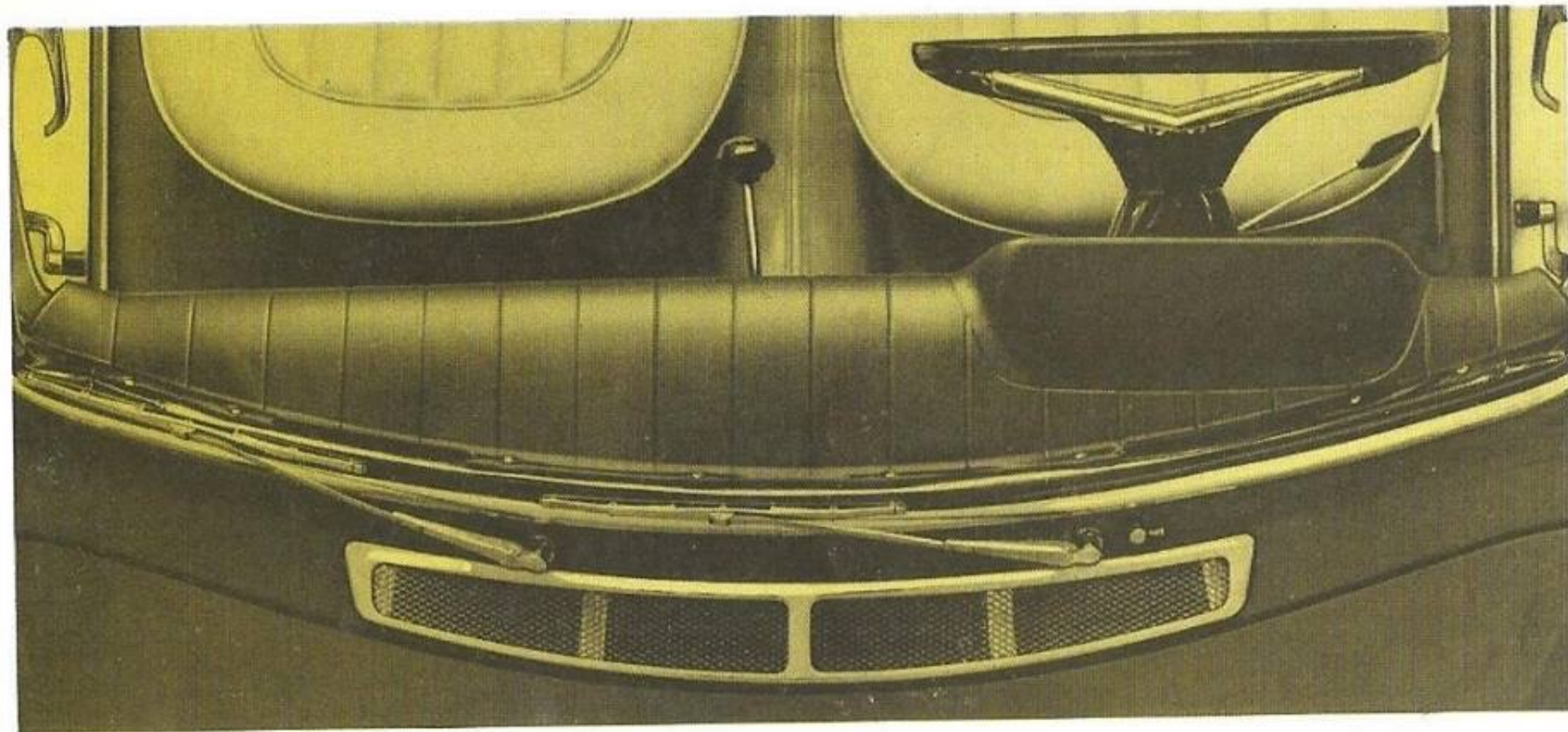
This Station Wagon is spacious and versatile. Its roomy interior combines passenger car comfort with the load carrying capacity of a small truck. It is economical and hard wearing in both functions. As a passenger car, it seats five adults comfortably, luggage space is generous. A few simple adjustments convert it into a two seater with a load 72" deep, 34" high, 50" wide. The rear opening divides horizontally; the upper half may be opened from the inside.

The rear compartment floor is low for ease of loading and unloading. Fragile or light packages are protected by a durable, attractive textile floor mat that can be rolled up, out of the way. Heavier materials can then be set directly on the tough steel floor.

The interior is completely lined with practical and smart leatherette.

The rear fender over-riders are rubber covered and act as foot supports when loading on roof rack, if used.

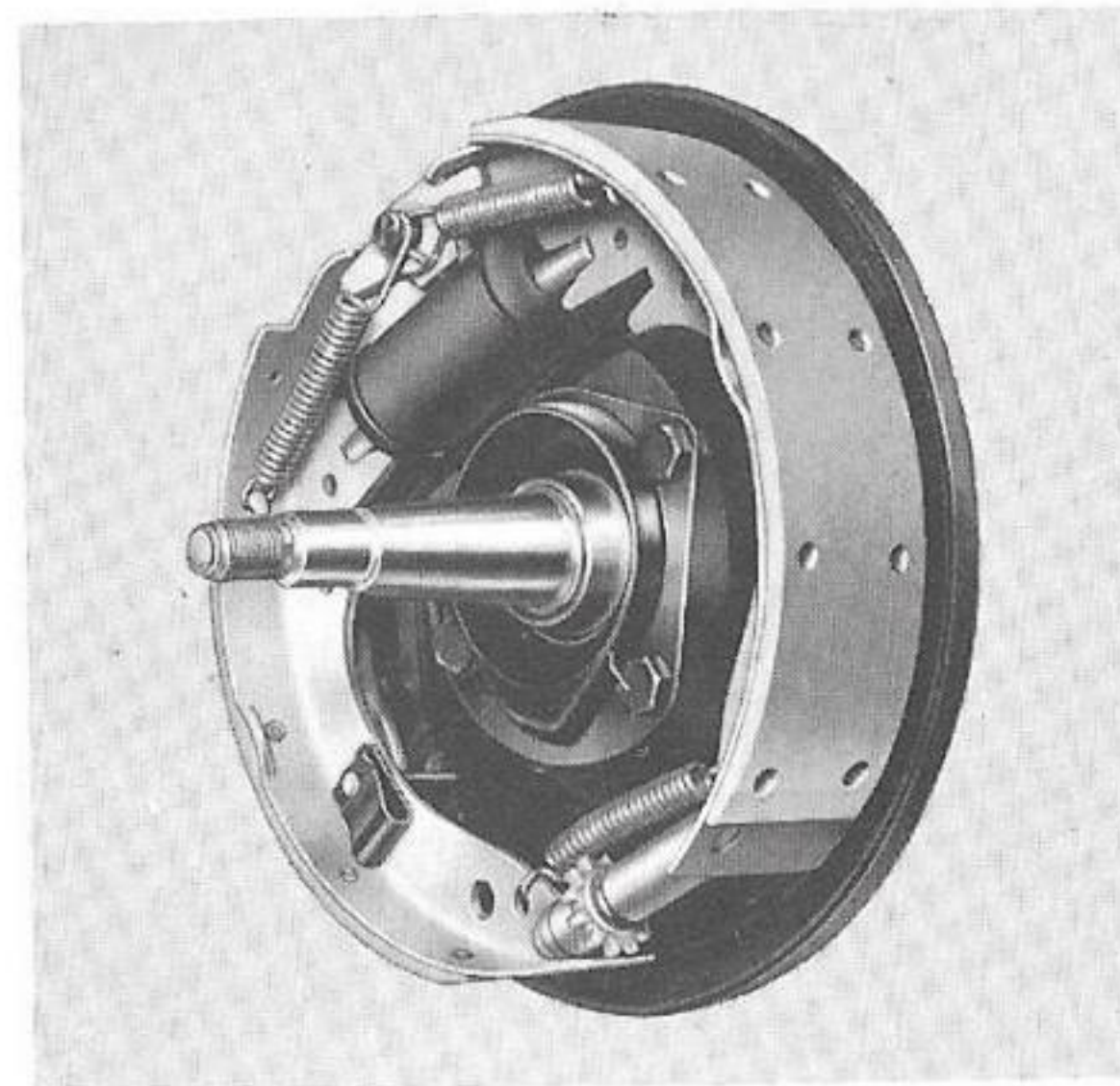
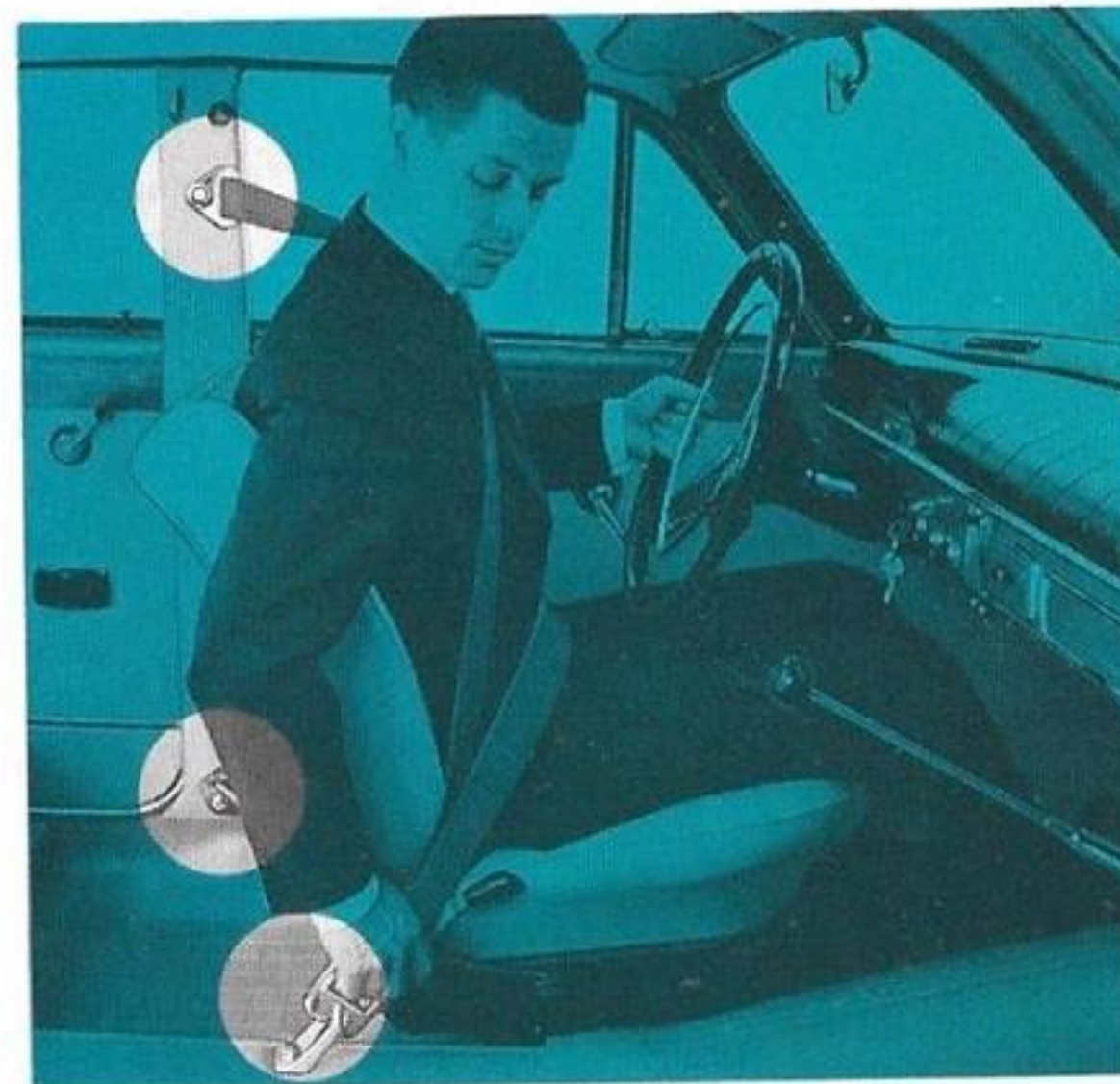
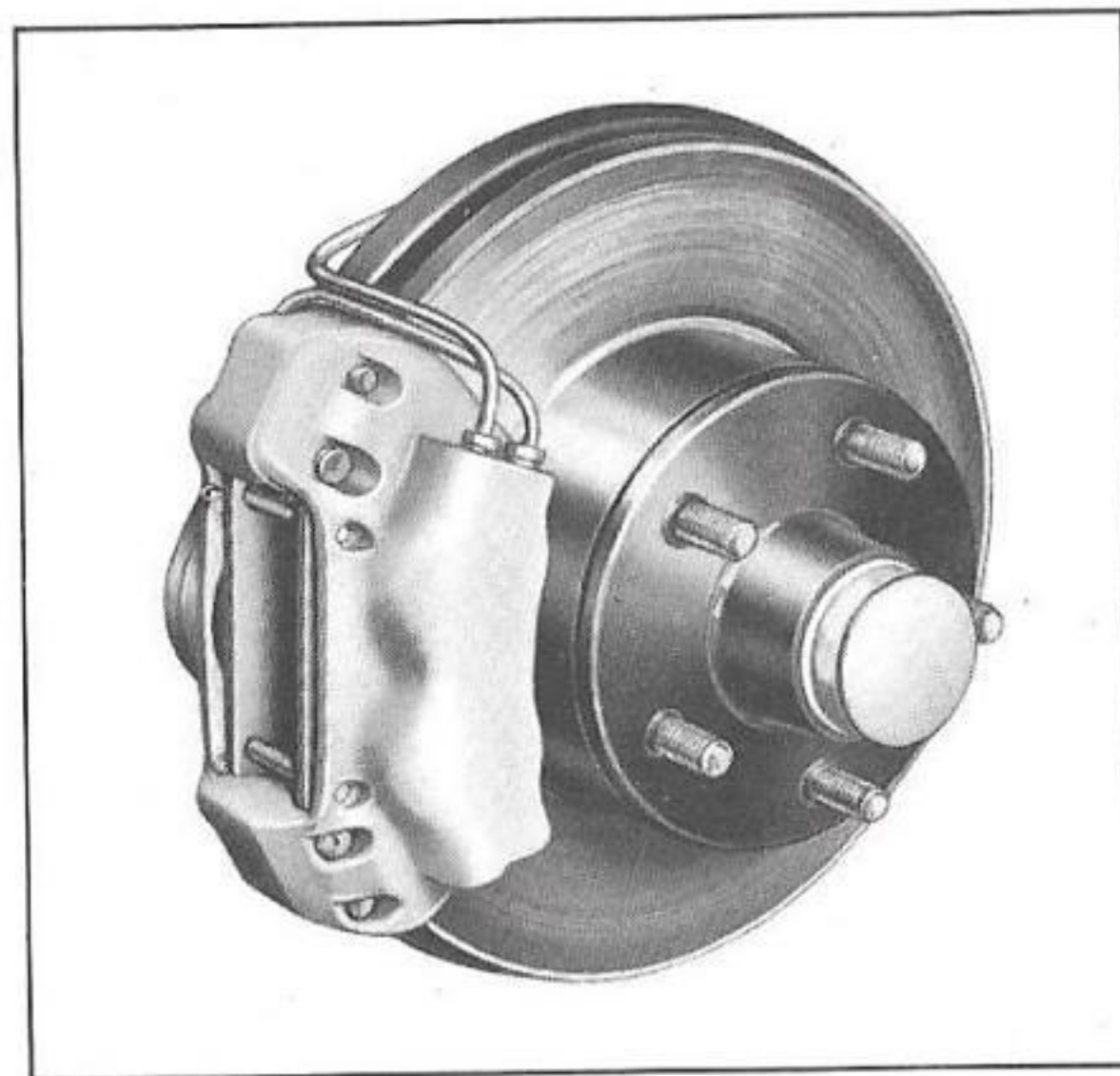




Volvo's laminated safety glass windshield meets all safety requirements. Fresh air intake is set right in front of windshield to prevent exhaust gas coming in from traffic ahead. Electric windshield wipers have selective, two-speed action.

Volvo safety belts, for front seats, are an available extra. This belt is of the three-point type, i.e. diagonal body and horizontal waist straps. Buckle is quick to release and easy to operate.

The Station Wagon has Duo-Servo type drum brakes all round; drum diam. is 10" (front), 9" (rear). The Sedan models have splash-guard protected disc brakes, front, and V-type drum brakes, rear.

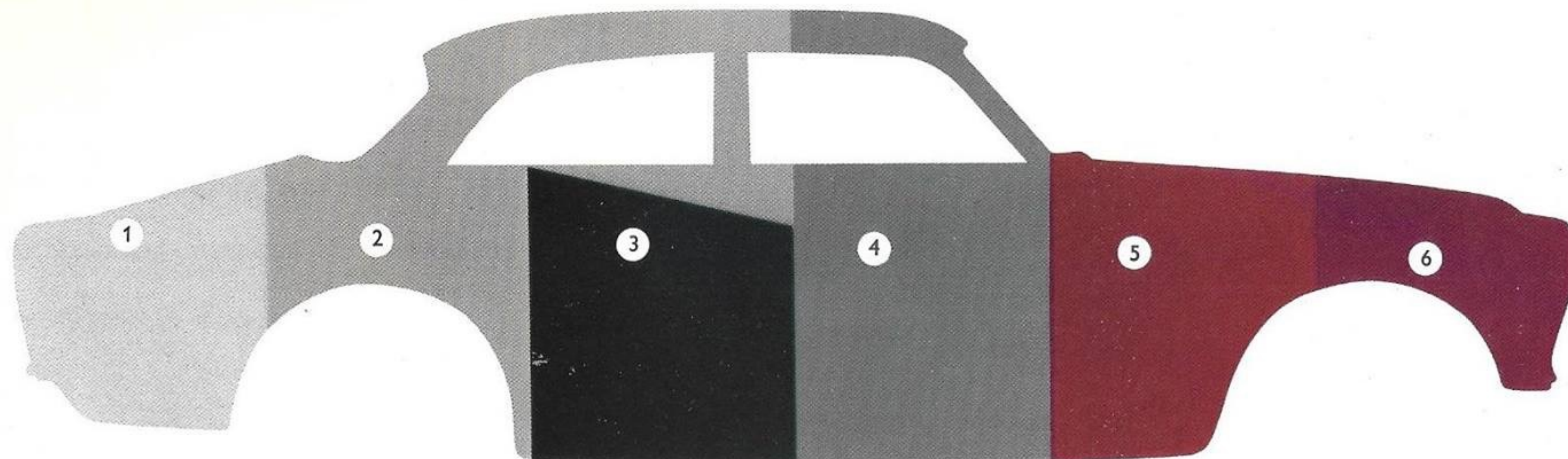


TECHNICAL INFORMATION



The Volvo 122S, with rigid and resistant body, is a safe car. Well designed wheel suspension and springing give exceptional road holding qualities. Large 15" wheels provide safe grip even on poor roads and stand up to heavy loads. Engine acceleration is outstanding; passing times are cut down to safe, low margins. Effective, well cooled drum brakes all round (Station Wagon)—and disc brakes, front, and drum brakes, rear—(on the Sedan models)—provide quick, safe stopping.

Three-point type safety belts are an available extra for front seats. For utmost security, strong anchorages for such belts, and for rear seat belts too, are fitted in during body production. Padding on instrument panel, sun visors, top edge of front seat backrests add to maximal safety.

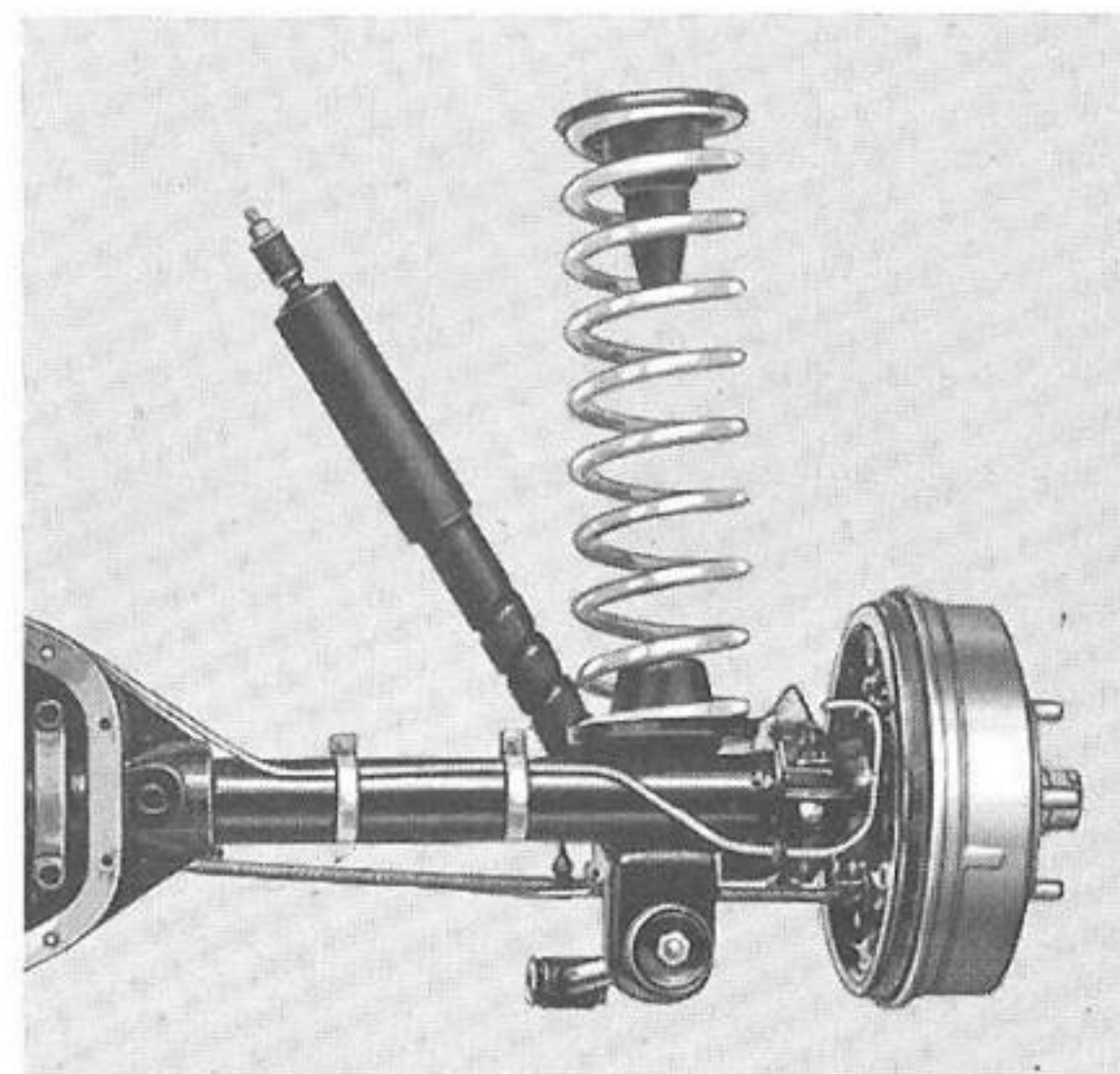
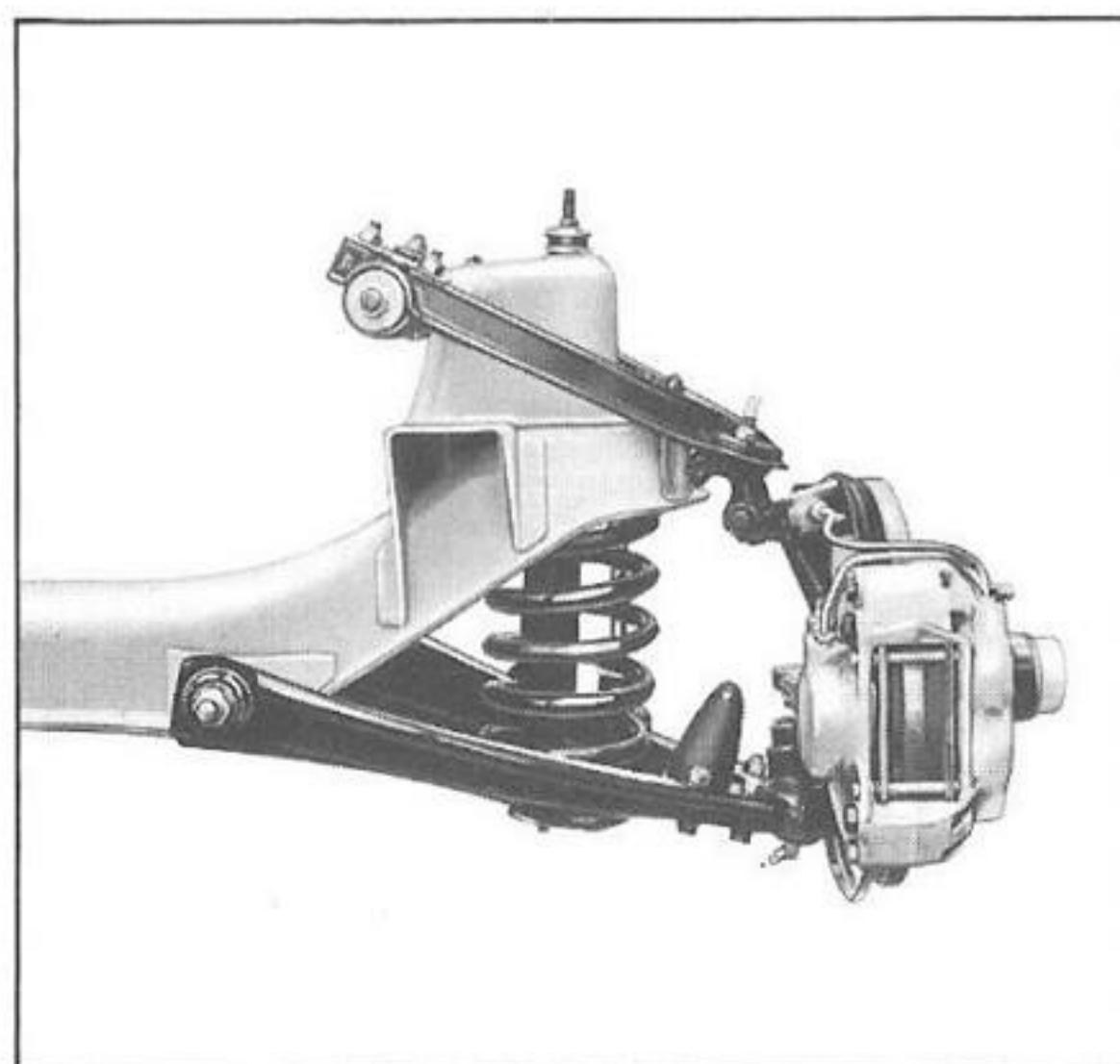


- 1 *Cleaned and finely-finished metal.*
- 2 *Phosphating.*
- 3 *Dipped primer.*
- 4 *Hot-sprayed primer.*
- 5 *Undercoating.*
- 6 *Final surface finish (3 coats).*

The pressed steel body is thoroughly treated against rust. After careful cleaning and grinding it is phosphated: surfaces get lightly etched for superior paint-adhesion. Body is then dipped in special anti-rust paint and dried. Painting follows in Volvos' ultramodern painting plant resulting in a durable and attractive surface finish.

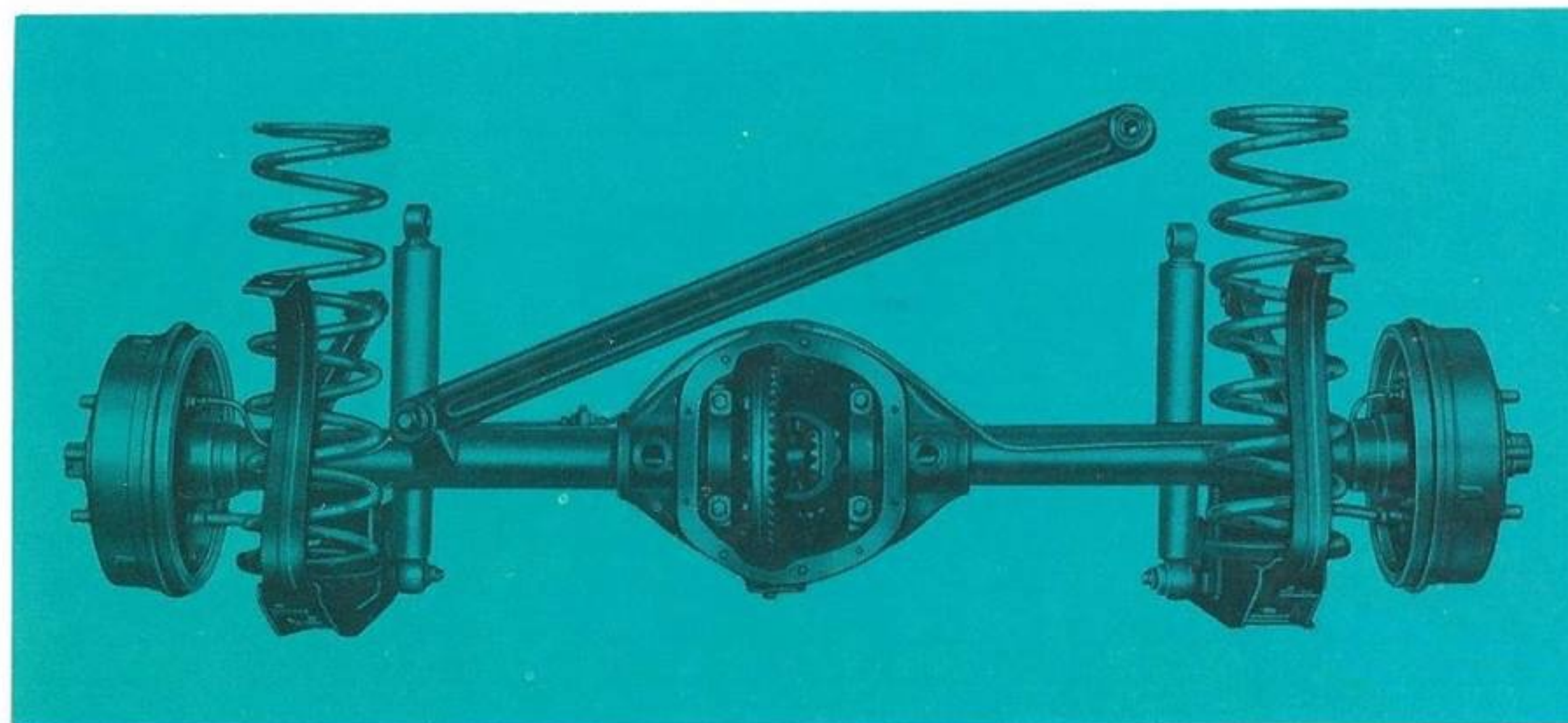
Volvo's careful preparatory work and modern painting methods produce bright and attractive finish to car bodies, longlasting luster and durable protection. *For added rust-resistance, covered parts in underbody are oil-sprayed; especially exposed parts are treated with rubber asphalt.*

Volvo's thorough anti-rust treatment and ideal finishing allows the car to stand outdoors around the year in any weather.

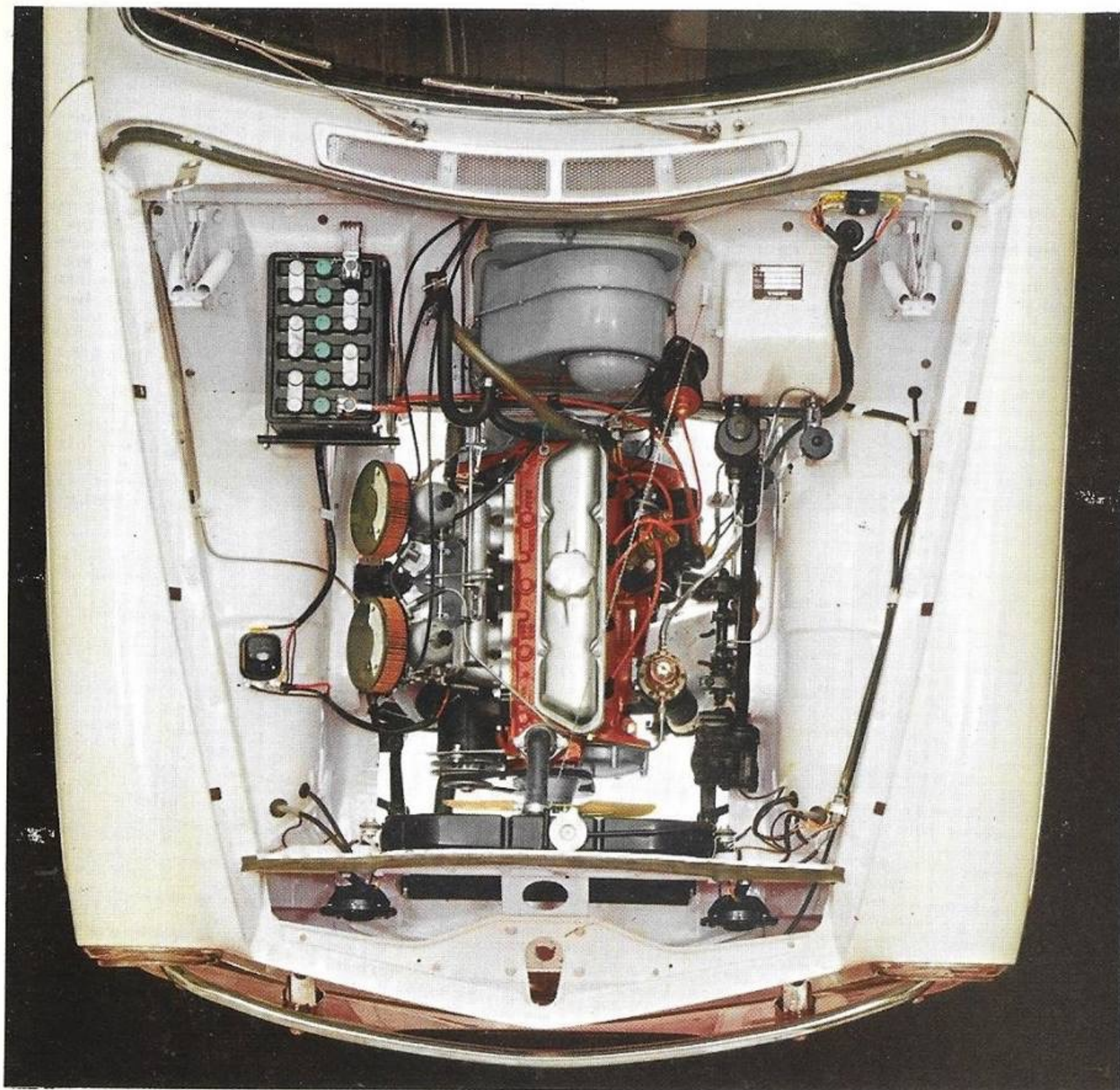


Front wheels are mounted in control arms carried in maintenance-free rubber bushings and ball joints. Suspension of coil springs and double-acting, hydraulic, telescopic shock absorbers. A stabilizer reduces roll when taking curves.

Rear axle is mounted in two rubber-bushed, lengthwise support arms. Axle is set lengthwise by two rubber-bushed torque arms and cross-wise by a tie-rod fixed to the body. Spring suspension of coil springs and hydraulic, telescopic shock absorbers.

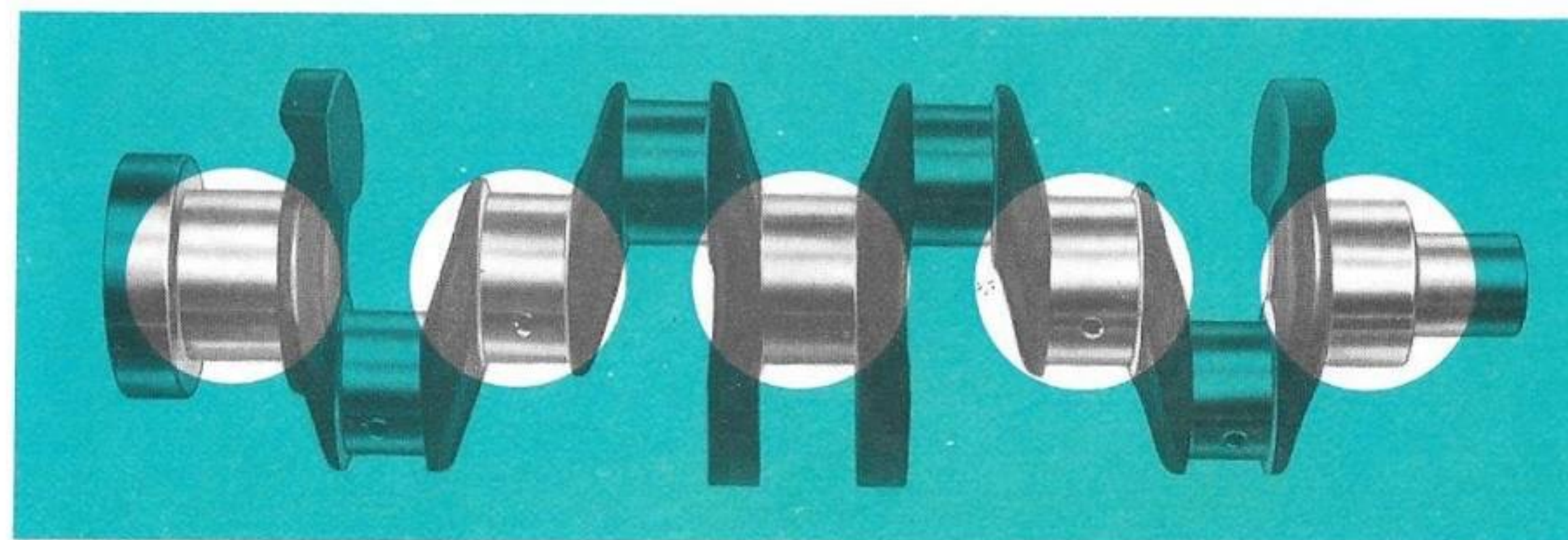


Rear axle suspension of the Station Wagon is reinforced. The coil springs have rubber spring-bushings for even running with heavy loads. Shock absorbers are extra-strong.



The engine compartment is well-planned; all parts are easy to reach.

The robust five-bearing crankshaft, of drop-forged steel, has large bearing surfaces: withstands heavy loads, allows high engine-speed and quiet, vibration-free running.



THE B18 ENGINE



The powerful, reliable 90 h.p. SAE engine—built with utmost precision—is a technical masterpiece!

Its many technical features include: sturdy five-bearing crankshaft, separate induction ports, fully-machined combustion chambers, and effective cooling of points most subjected to heat, like the seatings for exhaust valves and spark plugs.

The B18 has high mechanical efficiency, large output, good pulling power and flexibility. Robust construction makes for durability, quiet running and long life.

The B18 engine has two SU horizontal carburetors, each feeding two cylinders through separate induction ports. Use of fuel is most effective.

The oil-filter, full-flow type, cleans all oil before feeding lubricating points to reduce wear and improve oil economy.

The electrical system is 12-volt. Generator of high-effect and large capacity battery produce ample power for extra equipment like radio, fog lamp, spotlight, etc.

Starter motor has 1 h.p. for easy, cold weather starting.



SPECIFICATIONS



Volvo 122 S four-door (12244)

Type B 18 D engine, four-speed transmission. Disc brakes at front, drum brakes at rear.

Volvo 122 S two-door (13244)

Type B 18 D engine, four-speed transmission. Disc brakes at front, drum brakes at rear.

Volvo 122 S Station Wagon (22244)

Type B 18 D engine, four-speed transmission and drum brakes.

Type B 18 D engine

Four-cylinder O.H.V. and five-bearing crankshaft.
Bore 3.313"
Stroke 3.15"
Capacity 1.78 liters (109 cu. in.)
Compression ratio 8.5:1
Maximum output .. 90 h.p. (SAE) at 5,000 r.p.m.
Maximum torque .. 105 lb.ft. at 3,500 r.p.m.
Carburetors 2 SU horizontal carburetors
Oil filter Full-flow type

Cooling system

Very effective radiator. The cooling system contains 17 US pints. Water circulation thermostatically controlled. By-pass channel for restricting circulation when starting from cold.

Battery

Voltage 12 V
Capacity 60 Ah

Generator

Fan-cooled and with automatic voltage control.
Effect Max. 360 W

Starter motor

Output 1 h.p.
Starter contact in ignition switch. The switch also has a position where all the electrical equipment apart from the engine is switched on. The ignition switch and coil connected by a tamper-proof armored cable.

Clutch

8 1/2" single dry-disk clutch, hydraulically controlled.

Transmission

Four-speed, fully-synchronized.

Reduction ratios:	1st speed	3.13:1
	2nd speed	1.99:1
	3rd speed	1.36:1
	4th speed	1:1
	Reverse	3.25:1

Rear axle

Hypoid type.

Reduction ratio	4.1:1	Station Wagon	4.56:1
-----------------	-------	-------	---------------	-------	--------

Steering gear

Cam and roller.

Number of steering wheel turns from lock to lock 3 1/4

Front wheel suspension

Independent suspension with rubber-mounted control arms and ball joints, coil springs and stabilizer.

Rear wheel suspension

Rigid rear axle mounted in two longitudinal, rubber-mounted support arms and two longitudinal rubber-mounted torque arms. The axle is located laterally by a tie-rod attached to the body. Coil springs. In addition, the Station Wagon has progressively operating auxiliary springs of the rubber-bush type.

Shock absorbers

Double-acting, hydraulic, telescopic shock absorbers at front and rear. The Station Wagon model has extra strong shock absorbers at the rear.

Foot brake

On Station Wagon model

Duo-Servo drum brakes. Hydraulic and self-centering.

Drum diameter 10" front, 9" rear
Total brake lining area 147 sq.in.

On Sedan models

Front:

Hydraulic disc brakes of the three-cylinder type. Protected by splash guards and self-adjusting.

Brake disc (diameter×thickness) 10 7/8×1 1/2"
Brake friction area per front wheel .. 14.3 sq.in.

Rear:

Drum brakes of V-type. Hydraulic and self-centering.
Brake friction area per wheel 32.5 sq.in.

Handbrake

Operating mechanically on the rear wheels. Handbrake lever between the driving seat and door.

Wheels and tires

Pressed steel wheels. All wheels balanced.

Rim size 4J×15"
Station Wagon model 4 1/2J×15"

Tires with white sidewalls.

Size 5.90—15"
Station Wagon model 6.40—15"

Body

Integral, all-welded steel body, completely rust-protected. All enclosed spaces in the underbody treated with oil-mist spray. Particularly exposed parts treated with underbody sealing compound.

Fuel tank

Located at rear.

Capacity 12 US galls.

Lighting equipment

Flashers at front and rear. Stop and rear lights with built-in back-up lights. The interior lighting is switched on when either of the front doors is opened. Adjustable instrument lighting. Map-reading lamp.

Instrumentation

Combination instrument consisting of speedometer,

fuel and water temperature gauges, odometer and tripmeter. Warning lamps for charging, oil pressure, full headlights and directional signals.

Other equipment

Horn ring on steering wheel. Foot dipper switch. Directional signal switch lever with automatic return. Fresh-air fed heater and ventilation unit. Warm air supply thermostatically controlled. Two-speed ventilation fan. Two-speed electrical windshield wipers with automatic return. Padded sun visors. Dazzle-free rear view mirror. External rear view mirrors on Station Wagon model. Place for radio and loudspeaker. Map pockets on front doors. Cigarette lighter. Ashtrays at front and rear. Tool equipment including jack. Spare wheel. Safety belt anchorages for front and rear seats.

Common dimension for all cars in the 122 S-series

Wheelbase	102 1/2"
Track, front and rear	51 3/4"
Overall width	63 3/4"

Dimensions and weights for Sedan models

Overall length	175"
Overall height unloaded	59 1/4"
Turning circle	approx. 31 ft. 6 in.
Curb weight, two-door	approx. 2,360 lb.
Curb weight, four-door	approx. 2,400 lb.

Dimensions and weight of Station Wagon model

Overall length	176 1/2"
Overall height, unloaded	60 1/4"
Ground clearance, unloaded	8 3/4"
Ground clearance, with 4 persons	7"
Turning circle	approx. 33 ft. 10 in.
Curb weight	approx. 2,600 lb.

Luggage compartment

Length	46 3/4"
Length with rear seat down	72"
Overall width	49 1/2"
Height	34"
Space with rear seat up	approx. 40 cu.ft.
Space with rear seat down	approx. 65 cu.ft.

Rear opening

Width	41 1/2"
Height	30 3/4"

The factory reserves the right to modify price, design and equipment without previous notice.



QUALITY CONTROL

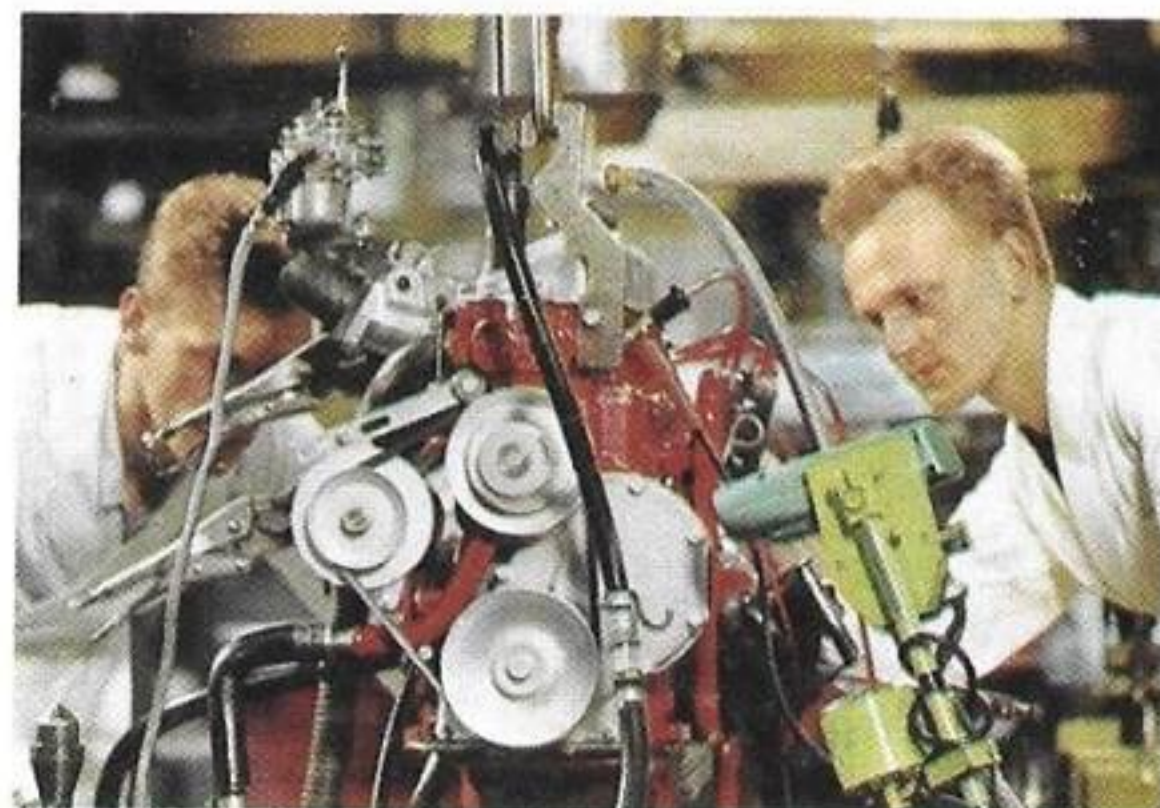


1

1 All Volvo cars undergo a water-proofing test. Jets of water hit the car from all directions for several minutes. Leakages (if any) are quickly spotted and corrected.

2 The Volvo engine is test-run after assembly for about 20 min. in special test benches. Hot engine-oil first flushes the engine clean internally. The engine is then tested for valve clearance, carburetor setting, etc.

3 Transmission functioning is tested in sound-proofed quarters having ingenious measuring instruments. Transmissions are bench-tested. Technicians check for perfect synchronization and quiet running at all engine speeds.



2



3

Quick, reliable, low-service

Volvo cars are well-known for high quality and low-cost maintenance. Volvo owners get expert service from workshops equipped with most modern machines and extensive stocks of spare parts. There are more than 500 authorized Volvo dealers in North America.



AB VOLVO
GÖTEBORG SWEDEN

Importers:
VOLVO IMPORT, INC.,
452 Hudson Terrace, Englewood Cliffs, New Jersey

Distributors:
VOLVO DISTRIBUTING, INC.,
452 Hudson Terrace, Englewood Cliffs, New Jersey

SWEDISH MOTOR IMPORT, INC.,
3301 West 12th Street, Houston 24, Texas

VOLVO WESTERN DISTRIBUTING, INC.,
12925 Riverside Drive, Sherman Oaks, Calif.

In Canada:
VOLVO (CANADA) LTD.
Head Office:
440 Comstock Road, Scarborough (Toronto), Ont.
Branch Office:
1090 W. Georgia St., Vancouver 5, B. C.