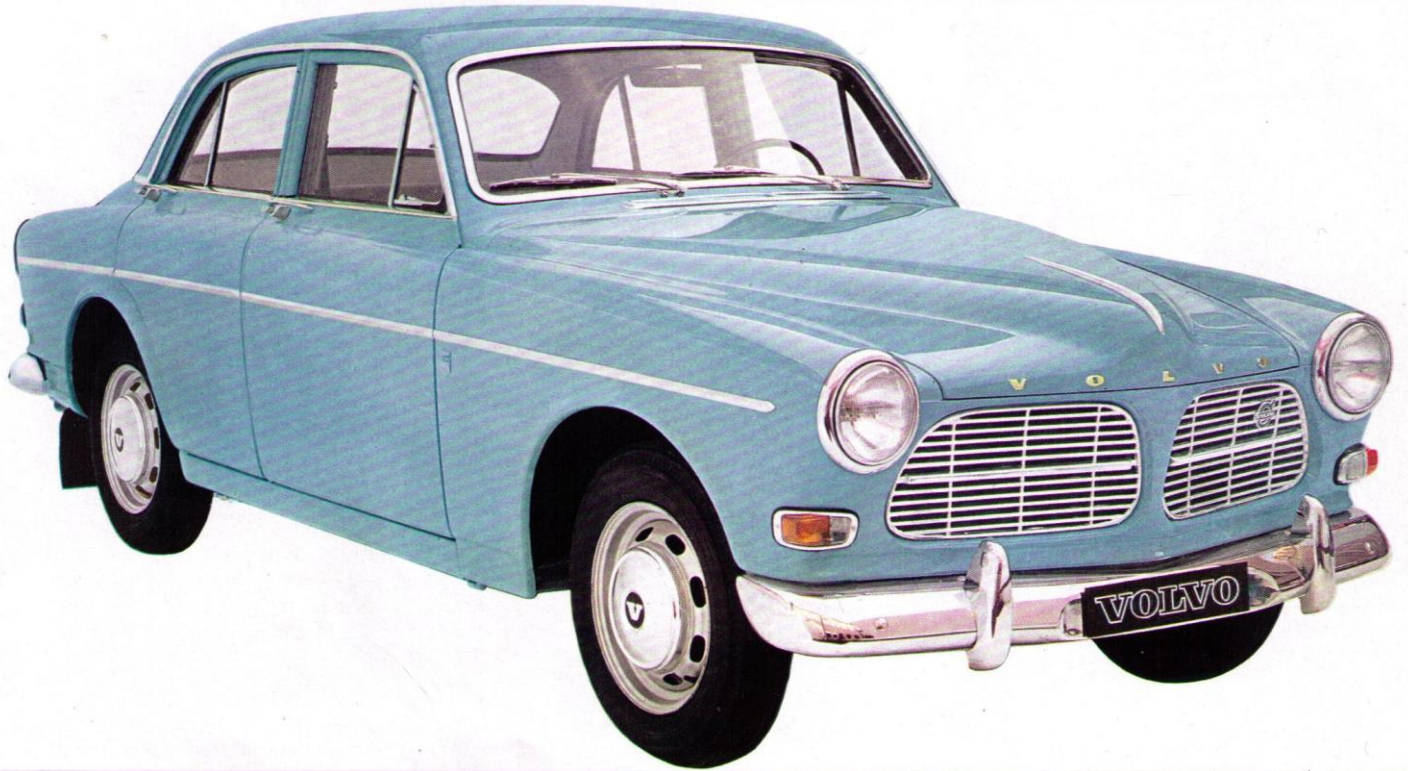


# VOLVO 122S SERIES



# VOLVO 122S SERIES

Volvo runs away from the other popular priced compact cars, gets over 25 miles to the gallon, and is virtually indestructible.

Volvo vehicles are of superior quality because of the high standards applied during the manufacturing process of all the parts, components, and especially in the final assembly of the total car. Volvo simply pays more attention to the workmanship and material used in the manufacture of its cars. It is a statistical fact that Volvo's in Sweden last almost twice as long as the average car on the road in the United States. Not to mention the fact that the climate in the United States is generally less severe and the roads somewhat better.

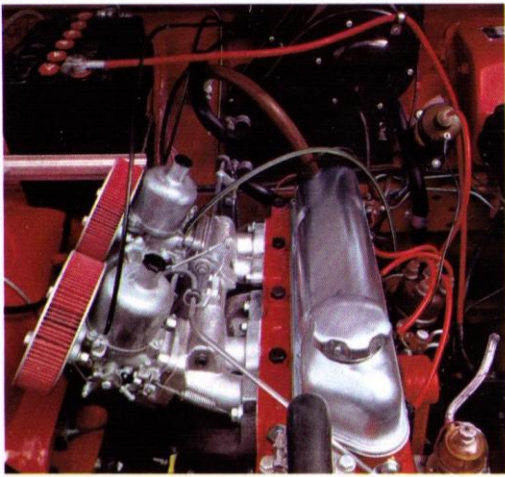
In keeping with Volvo's policy of progressive improvement of its products the new features found in the current models are: a new interior that is designed after the proven and accepted 1800 S GT coupé. Disc brakes on all models. New slotted wheels for better brake cooling. Stainless steel hub caps. Practical, easy to care for, pressed rubber, carpet looking, floor mats.

The Volvo engine is a powerful 90 SAE horsepower unit with the performance of a sport's car engine. The output is high because of its high compression ratio, separate induction ports, twin car-

buretors and machined combustion chambers. This engine gives you high torque over a wide range of engine speeds that permits smooth driving without excessive gear changing. Roadability and handling are outstanding for safe, comfortable driving. This is a readily demonstrable claim. You are invited to take a Volvo out and "Drive it like you hate it".

Volvo believes that if you make a car that goes — you should also make a car that stops. For some years now Volvos have had what is generally considered to be the best braking system in the world: disc brakes. The entire 122 S Series has disc brakes.

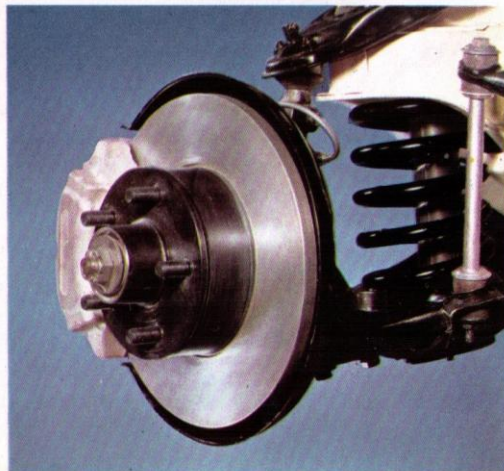
Volvo also believes that if you build a car that stops and goes, you should be able to drive it in comfort while you're doing these things. The new interior on the 122 S Series is of a completely new design and construction. A newly developed upholstery material that breathes plus an entirely new construction makes for an extremely comfortable seat. Try it. Volvo Sedans are now available with an automatic transmission. And they STILL get over 25 miles to the gallon.



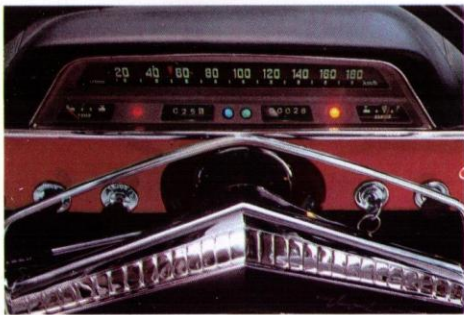
Twin carburetors give outstanding performance.



Three-point seat belt and grab handle.



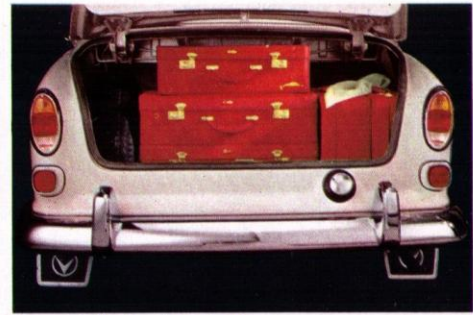
Disc brakes front are standard equipment.



Easy to read instruments.



Comfort for five, luxury for four.



Large, fully lined trunk space.



The new front seats are almost infinitely adjustable in all directions.



The Volvo 122 S Station Wagon does everything the Sedans do. It just carries more kids, shrubbery, packages etc., while doing it.

# Specifications

Importers:  
**VOLVO INC.,**  
Volvo Drive, Rockleigh, N.J.

Distributors:  
**VOLVO DISTRIBUTING INC.,**  
Volvo Drive, Rockleigh, N.J.

**SWEDISH MOTOR IMPORT, INC.,**  
3303 West 12th Street, Houston 24, Texas

**VOLVO WESTERN DISTRIBUTING, INC.,**  
12925 Riverside Drive, Sherman Oaks, Calif.

# AB VOLVO

GOTEBORG - SWEDEN

RELEASED BY DETROIT PUBLIC LIBRARY

## Type B 18 D engine

Four-cylinder O.H.V. and five-bearing crankshaft.

Bore ..... 3.313"  
Stroke ..... 3.15"  
Capacity ..... 1.78 liters (109 cu.in.)  
Compression ratio 8.5:1  
Maximum output 90 h.p. (SAE) at 5,000 r.p.m.  
Maximum torque 105 lb.ft. at 3,500 r.p.m.  
Carburetors .... 2 horizontal carburetors  
Oil filter ..... Full-flow type

## Cooling system

Very effective radiator. Water circulation thermostatically controlled.

## Battery

Voltage ..... 12 V  
Capacity ..... 60 Ah

## Generator

Output ..... Max. 360 W

## Starter motor

Output ..... 1 h.p.  
Starter contact in ignition switch. The ignition switch and coil connected by a tamper-proof armored cable.

## Clutch

8½" single dry-disk clutch, hydraulically controlled.

## Transmission (mechanical)

Four-speed, fully-synchronized.  
Reduction ratios: 1st speed ..... 3.13:1  
2nd speed ..... 1.99:1  
3rd speed ..... 1.36:1  
4th speed ..... 1:1  
Reverse ..... 3.25:1

## Transmission (automatic)

Hydraulic torque converter. Fully automatic transmission. Standard P-R-N-D-L shift.

## REAR AXLE

Hypoid type. Station Wagon  
Reduction ratio ..... 4.1:1 4.56:1

## Steering gear

### CAM AND ROLLER

Number of steering wheel turns from lock to lock ..... 3¼  
Turning circle ..... approx. 31 ft. 6 in.  
Turning circle, Wagon .. approx. 33 ft. 10 in.

## Front wheel suspension

Independent suspension with rubber-mounted control arms and ball joints, coil springs and stabilizers.

## Rear wheel suspension

Rigid rear axle mounted in two longitudinal, rubber-mounted support arms and twin longitudinal rubber-mounted torque arms. The axle is located laterally by a tie-rod attached to the body. Coil springs. In addition, the Station Wagon has progressively operating auxiliary springs of the rubber-bush type.

## Shock absorbers

Double-acting, hydraulic, telescopic shock absorbers at front and rear.

## Foot brake

### FRONT

Hydraulic disc brakes. Protected by splash guards and self-adjusting.

### REAR

Drum brakes of the V-type. Hydraulic and self-centering.

The Station Wagon has vacuum-servo operated brakes.

## Handbrake

Operating mechanically on the rear wheels. Handbrake lever between the driving seat and door.

## Wheels and tires.

Pressed steel wheels. All wheels balanced. Tires with white sidewalls.  
Size ..... 6.00—15"  
Station Wagon model ..... 6.40—15"

## Body

Integral, all-welded steel body, completely rust-protected.

## Fuel tank

Located at rear.  
Capacity ..... 12 US galls.

## Lighting equipment

Directional flashers at front and rear. Stop and rear lights with built-in back-up lights. The interior lighting is switched on when either of the front doors is opened. Adjustable instrument lighting. Map-reading lamp.

## Instrumentation

Combination instrument consisting of speedometer, fuel and water temperature gauges, odometer and tripmeter. Warning lamps for charging and oil pressure. Control lamps for main beams and directional signals.

## Other equipment

Horn ring on steering wheel. Foot dimmer switch. Directional signal switch lever with automatic return. Fresh-air fed heater and ventilation unit. Warm air supply thermostatically controlled. Two-speed ventilation fan. Two-speed electrical windshield wipers with automatic return. Padded sun visors. Dazzle-free rear view mirror. Place for radio and loud-speaker. Map pockets on front doors. Grab handle on dash. Cigarette lighter. Ashtrays at front and rear. Tool equipment including jack. Spare wheel. Seat belts for front seats and belt anchorages for rear seat.

## Dimensions common to all cars in the 122 S-series

Wheelbase ..... 102½"  
Track, front and rear ..... 51¾"  
Overall width ..... 63¾"

## Dimensions and weights for Sedan models

Overall length ..... 175"  
Overall height unloaded ..... 59¼"  
Curb weight, two-door ..... approx. 2,360 lb.  
Curb weight, four-door ..... approx. 2,425 lb.

## Dimensions and weight of Station Wagon model

Overall length ..... 176½"  
Overall height, unloaded ..... 60¼"  
Ground clearance, unloaded ..... 8¾"  
Ground clearance, with 4 persons .. 7"  
Curb weight ..... approx. 2,640 lb.

## LUGGAGE COMPARTMENT

Length ..... 46¾"  
Length with rear seat down ..... 72"  
Overall width ..... 49½"  
Height ..... 34"  
Space with rear seat up .... approx. 40 cu.ft.  
Space with rear seat down .. approx. 65 cu.ft.

## Rear opening

Width ..... 41½"  
Height ..... 30¾"

The factory reserves the right to modify price, design and equipment without previous notice.