

| | | | | |
|---|---------------|--------------|---|-----------------|
| ÄNDRINGSINFORMATION CHANGE INFORMATION | DATUM DATE | SIDA PAGE | ÄNDRING CHANGE T = TILLKOMMER / ADDED V = VAR / WAS U = UTGÅR / DELETED | STANDARD |
| 1796 | 96-10-28 | | Se ÅI / See CI | |

KRYSSÄNKSKRUVAR MED KULLERSÄNKHUVUD

UNC-gängor
Rostfritt stål, hållfasthetsklass A2-70

CROSS RECESSED RAISED COUNTERSUNK HEAD SCREWS

UNC-threads
Stainless steel, property class A2-70

KRAV

Material

Rostfritt stål, hållfasthetsklass A2-70 STD 7121,14.

Övrigt

Krysspår STD 7121,243.

Fria från grader, skarpa kanter och andra defekter som minskar användbarheten.

Konsekvensklass [4] gäller för ej markerade egenskaper.

Symboler, beteckningar och allmänt ritsätt STD 5023,501.

Tillverkningsbestämmelser STD 7121,1 och STD 7121,24.

REQUIREMENTS

Material

Stainless steel, property class A2-70 STD 7121,14.

Others


Cross recess STD 7121,243.

Free from burrs, sharp edges and other defects which may lessen the usability.

Consequence class [4] applies to properties not marked.

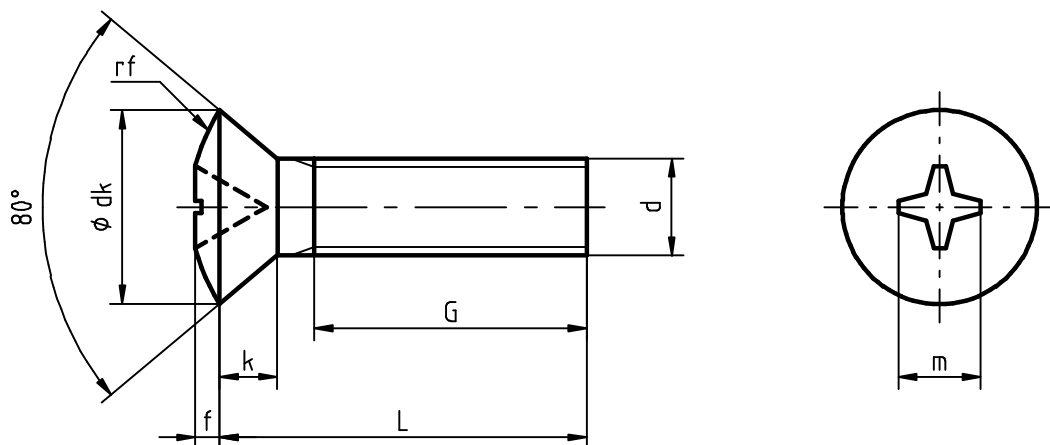
Symbols, designations and general drawing methods STD 5023,501.

Manufacturing specifications STD 7121,1 and STD 7121,24.

| | | | |
|---|----------------------|--|-----------------------|
| GODKÄND / APPROVED 96-10-28, S Jarde | | UPPRÄTTAD / ESTABLISHED 1996-10-28, G Ohlén | |
| AVD / DEPT 6855 | FUNCT. GROUP 1124 | BENÄMNING Kryssänkskruv d x L nom | |
| NOTICE. THIS DOCUMENT CONTAINS PROPRIETARY INFORMATION AND SHALL NOT BE USED OR REPRODUCED OR ITS CONTENTS DISCLOSED IN WHOLE OR IN PART, WITHOUT THE PRIOR WRITTEN CONSENT OF VOLVO CORPORATE STANDARDS. | | TITLE Cross recessed sunk screw d x L nom | |
|  Volvo Corporate Standards | | DOKUMENTTYP | |
| | | TABELLRITNING DOCUMENT TYPE | |
| | | TABULAR DRAWING | |
| | | RITNING NR / DRAWING NO 1053010 | UTGÅVA / ISSUE 001 |

Dimensioner

Dimensions



| Gänga d Thread | | Nr/No. 10 | Nr/No. 12 | 1/4 | 5/16 | | | | |
|-----------------------------------|-----------------------|-----------|--------------------|------|--------------------|----|--------------------|---|--------------------|
| d | nom | 4,826 | 5,486 | 6,35 | 7,938 | | | | |
| dk | | 9,7 | 11,1 | 12,8 | 16,1 | | | | |
| k | | 2,9 | 3,4 | 3,9 | 4,9 | | | | |
| f | max | 1,5 | 1,7 | 2 | 2,5 | | | | |
| rf | ≈ | 9,7 | 11,1 | 12,8 | 16,1 | | | | |
| m | ≈ | 5,1 | 6,7 | 7,2 | 9,7 | | | | |
| Krysspår/Cross recess nr/No. | | 2 | 3 | 3 | 4 | | | | |
| L | | G | Art nr Part No. | G | Art nr Part No. | G | Art nr Part No. | G | Art nr Part No. |
| Basmått Basic dim. Tum/inch | Längd Length mm | | | | | | | | |
| 1/2 | 13 | | | - | 943662 | | | | |
| 5/8 | 16 | | | | | - | 945360 | | |
| 3/4 | 19 | | | | | - | 940177 | - | 941282 |
| 7/8 | 22 | | | | | - | 940178 | | |
| 1 | 25 | | | | | - | 942818 | | |
| 1 1/4 | 32 | - | 943091 | | | - | 943218 | | |
| 1 3/4 | 45 | | | | | - | 941815 | | |
| 2 1/4 | 57 | | | | | 44 | 940315 | | |

För samtliga artiklar gäller artikelutgåva / artikelutförande P01
Part issue / Part version P01 applies to all parts

| | | | |
|---|------------------------------------|----------------|-------------|
| <h1>VOLVO</h1> <p>Volvo Corporate Standards</p> | BENÄMNING | | |
| | Kryssänskräv d x Lnom | | |
| | TITLE | | |
| | Cross recessed sunk screw d x Lnom | | |
| RITNING NR / DRAWING NO | | UTGÅVA / ISSUE | SIDA / PAGE |
| 1053010 | | 001 | 2 (2) |