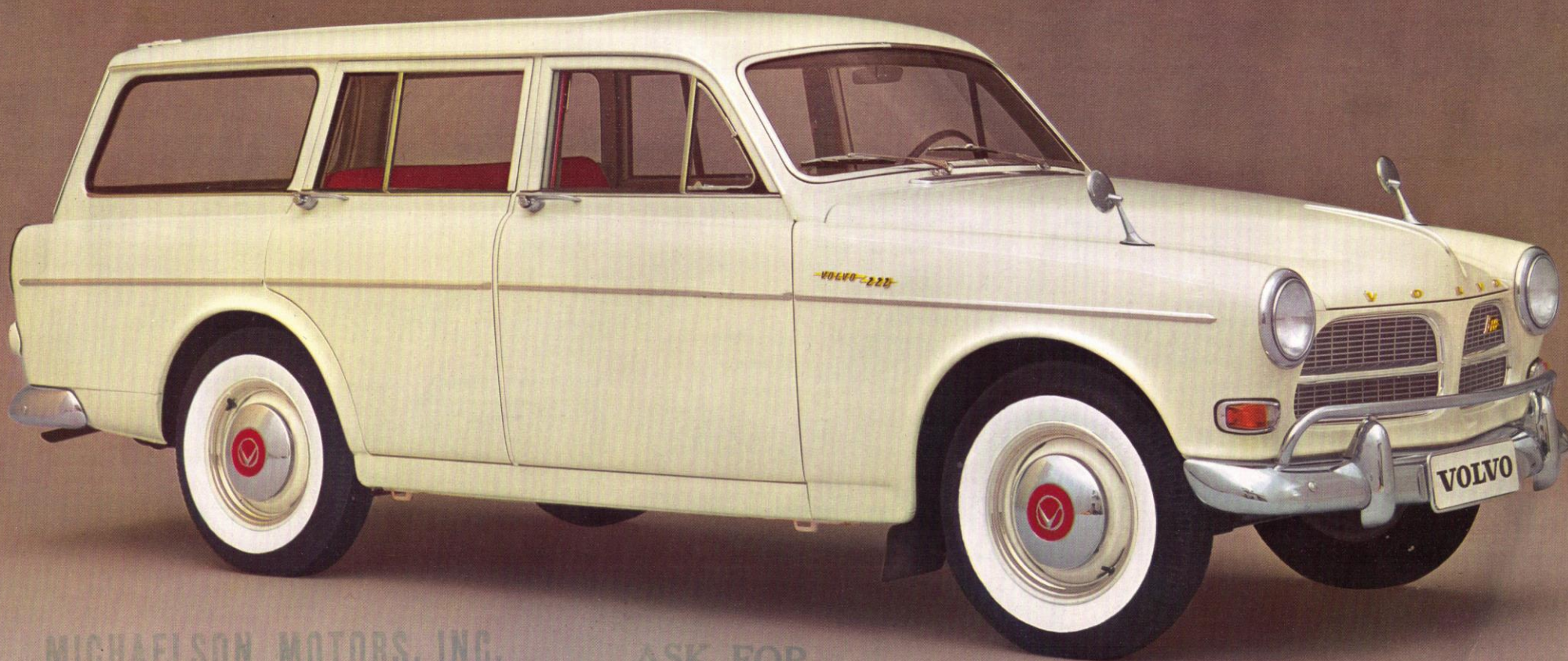


# VOLVO

## 122S

### STATION WAGON



MICHAELSON MOTORS, INC.  
5801 REISTERSTOWN RD., BALTIMORE 15, MD.

ASK FOR  
TED LEVIN

# VOLVO 122S STATION WAGON



To travel in a Volvo 122 S Station Wagon is to travel in exclusive comfort. This is ensured by the use of top class material, skilled craftsmanship and quality right down to the smallest detail.

The four wide doors provide easy entry and the seats themselves are both roomy and comfortable. The separate front seats are of a slightly concave design and provide perfect support even when taking curves at high speed. They can also be easily adjusted to different positions for individual comfort. The rear seat is wide and luxurious and there is plenty of room for three people.



#### B 18 D engine

Four-cylinder, overhead valves, five-bearing crankshaft.

Bore ..... 3.313" (84.14 mm)  
Stroke ..... 3.15" (80 mm)  
Capacity ..... 1.78 liters  
Compression ratio.. 8.5:1  
Max. output ..... 90 b.h.p. (SAE)  
at 5000 r.p.m.  
Max. torque ..... 105 lb.ft. (14.5 kgm)  
(SAE) at 3500 r.p.m.  
Carburetors ..... Two SU 1 1/4"  
horizontal carburetors

Fullflow oil filter.

#### Cooling system

Hyper-effective radiator. Thermostat-controlled water circulation with bypass valve.

#### Battery

Voltage ..... 12 V  
Capacity ..... 60 amp. hours

#### Generator

Fan-cooled with automatic voltage control.  
Output ..... max. 30 A

#### Starter motor

Output ..... 1 h.p.  
The starter switch is combined with the ignition switch has also an extra position in which all the electric equipment can be used when the engine is not running.

There is a tamperproof armored cable between the ignition switch and the ignition coil.

#### Clutch

Hydraulically operated 8 1/2" single dry plate clutch.

#### Transmission

Four-speed, fully synchronized and silent running transmission with a central floor shift lever.  
Ratios: 1st ..... 3.13:1  
2nd ..... 1.99:1  
3rd ..... 1.36:1  
4th ..... 1:1  
Reverse ..... 3.25:1

#### Propeller shaft

Divided for vibration-free operation. The center bearing is mounted in rubber blocks to damp noise and vibration. Center ball bearing lubricated for life.

#### Rear axle

Hypoid type.  
Ratio ..... 4.56:1

#### Steering gear

Cam and roller type.  
Steering box ratio.. 15.5:1  
Number of turns,  
left lock to right  
lock ..... 3 1/4  
Turning circle ..... 33 1/2 ft.

#### Front suspension

Independent suspension with coil springs and control arms carried in rubber bushings and ball joints. Stabilizer.

#### Rear suspension

Fixed longitudinal support arms, torque rods and track bar. Coil springs.

#### Shock absorbers

Double-acting, hydraulic, telescopic shock absorbers front and rear.

#### Wheels and tires

Pressed steel wheels — 4 1/2" rims.  
All wheels balanced.  
Tubeless 6.40—15" tires.

#### Footbrake

Duo-Servo drum brakes. Hydraulic and self-centering.  
Drum diameter ..... 10" front, 9" rear  
Total brake friction  
area ..... 147 sq.in.

#### Handbrake

Operates separately on rear wheels. Handbrake lever located beside driving seat.

#### Body

Integral construction, all-welded steel body, fully rust-proofed by modern methods.

#### Fuel tank

Located at rear.  
Capacity ..... 12 US gallons (10 Imp.  
galls. = 45 liters)

#### Lighting equipment

Flasher directional signals front and rear with audible and visible warning signals. Combined stop and tail lamps. Reversing lights can be incorporated in the tail lamps. The internal lighting goes on when either of the front doors are opened. Rheostat-controlled instrument lighting. Map-reading lamp.

#### Instrumentation

Combined instrument with speedometer, fuel gauge and water temperature gauge. Mileometer and trip meter. Warning lamps for charging, oil pressure, full headlights, directional signals.

#### Miscellaneous equipment

Horn ring on steering wheel. Foot dimmer switch. Directional signal lever with automatic return. Heater and ventilation installation. Thermostat-controlled heat supply. Two-speed fan. Electric windshield wipers with two speeds and automatic parking. Nozzles for windshield washers. Twin padded sun visors. Dazzle-free rear view mirror. External mirrors fitted on front fenders. Recess for radio and accommo-

modation for loudspeaker. Pockets on front doors. Cigarette lighter. Ashtrays front and rear. Mud flaps. Tool kit and jack. Spare wheel.

#### Safety belts

Standard equipment includes anchorages for front and rear seat safety belts.

#### Main dimensions and weight

Wheelbase ..... 102.4"  
Track, rear ..... 51.8"  
Track, rear ..... 51.8"  
Overall length ..... 177"  
Overall width ..... 64"  
Overall height,  
unloaded ..... 60"  
Ground clearance,  
unloaded ..... 8.7"  
Ground clearance,  
with four passengers 7.1"  
Cargo space:  
Length ..... 46.6"  
Length with rear  
seat folded down .. 72"  
Maximum width ... 50"  
Height ..... 34"  
Rear door opening:  
Width ..... 41.5"  
Height ..... 31"  
Curb weight ..... 2625 lb.

The factory reserves the right to modify prices, design and equipment.

AB VOLVO

GOTHENBURG • SWEDEN



Importers:  
**VOLVO IMPORT, INC.,**  
452 Hudson Terrace, Englewood Cliffs,  
New Jersey

Distributors:  
**VOLVO DISTRIBUTING, INC.,**  
452 Hudson Terrace, Englewood Cliffs,  
New Jersey

**SWEDISH MOTOR IMPORT, INC.,**  
3301 West 12th Street, Houston 24, Texas

**VOLVO WESTERN DISTRIBUTING, INC.,**  
12925 Riverside Drive, Sherman Oaks, Calif.

In Canada:  
**VOLVO (CANADA) LTD.**  
Head Office: 440 Comstock Road,  
Scarborough (Toronto), Ont.  
Branch Office: 1090 W. Georgia St.,  
Vancouver 5, B. C.